

Plasma A β ₄₂ as Biomarker of Prodromal Alzheimer's Disease Progression in Patients with Amnesic Mild Cognitive Impairment: Evidence from the PharmaCog/E-ADNI Study

Diego Albani^{a,*}, Moira Marizzoni^b, Clarissa Ferrari^c, Federica Fusco^a, Lucia Boeri^a, Ilaria Raimondi^a, Jorge Jovicich^d, Claudio Babiloni^{e,f}, Andrea Soricelli^g, Roberta Lizio^e, Samantha Galluzzi^b, Libera Cavaliere^b, Mira Didic^{h,i}, Peter Schönknecht^j, José Luis Molinuevo^k, Flavio Nobili^l, Lucilla Parnetti^m, Pierre Payouxⁿ, Luisella Bocchio^o, Marco Salvatore^g, Paolo Maria Rossini^{p,q}, Magda Tsolaki^r, Pieter Jelle Visser^s, Jill C. Richardson^t, Jens Wiltfang^{u,v,w}, Régis Bordet^x, Olivier Blin^y, Gianluigi Forloni^a, Giovanni B. Frisoni^{b,z} and PharmaCog Consortium

^aDepartment of Neuroscience, IRCCS - Istituto di Ricerche Farmacologiche Mario Negri, Milan, Italy

^bLaboratory of Neuroimaging and Alzheimer's Epidemiology, IRCCS Istituto Centro San Giovanni di Dio Fatebenefratelli, Brescia, Italy

^cUnit of Statistics, IRCCS Istituto Centro San Giovanni di Dio Fatebenefratelli, Brescia, Italy

^dMR Lab Head, Center for Mind/Brain Sciences, University of Trento, Italy

^eDepartment of Physiology and Pharmacology "V. Erspamer", Sapienza University of Rome, Rome, Italy

^fDepartment of Neuroscience, IRCCS San Raffaele Pisana of Rome and Cassino, Rome and Cassino, Italy

^gIRCCS SDN Istituto di Ricerca Diagnostica e Nucleare, Napoli, Italy

^hAix-Marseille Université, INSERM, INS UMR_S 1106, Marseille, France

ⁱAPHM, Timone, Service de Neurologie et Neuropsychologie, APHM Hôpital Timone Adultes, Marseille, France

^jDepartment of Psychiatry and Psychotherapy, University of Leipzig, Leipzig, Germany, Germany

^kAlzheimer's Disease Unit and Other Cognitive Disorders Unit, Hospital Clínic de Barcelona, and Institut d'Investigacions Biomèdiques August Pi i Sunyer (IDIBAPS), Barcelona, Catalunya, Spain

^lClinical Neurology, Dept. of Neuroscience (DINO GMI), University of Genoa and IRCCS AOU San Martino-IST, Genoa, Italy

^mClinica Neurologica, Università di Perugia, Ospedale Santa Maria della Misericordia, Perugia, Italy

ⁿINSERM, Imagerie cérébrale et handicaps neurologiques UMR 825, Toulouse, France

^oGenetic Unit, IRCCS Centro Giovanni di Dio, Fatebenefratelli, Brescia, Italy; Faculty of Psychology, University eCampus, Novedrate (Como), Italy

^pDepartment of Gerontology, Neurosciences and Orthopedics, Catholic University, Rome, Italy

^qPoliclinic A. Gemelli Foundation

^r3rd Neurologic Clinic, Medical School, G. Papanikolaou Hospital, Aristotle University of Thessaloniki, Thessaloniki, Greece

^sDepartment of Neurology, Alzheimer Centre, VU Medical Centre, Amsterdam, The Netherlands

*Correspondence to: Dr. Diego Albani, Neuroscience Department, IRCCS – Istituto di Ricerche Farmacologiche Mario Negri, Milan, Italy. Tel.: +39 02 39014594; Fax: +39 02 35462770461 28 3066; E-mail: diego.albani@marionegri.it

[†]Neurosciences Therapeutic Area, GlaxoSmithKline R&D, Gunnels Wood Road, Stevenage, United Kingdom

[‡]LVR-Hospital Essen, Department of Psychiatry and Psychotherapy, Faculty of Medicine, University of Duisburg-Essen, Essen, Germany

[‡]Department of Psychiatry and Psychotherapy, University Medical Center (UMG), Georg-August-University, Göttingen, Germany

^wiBiMED, Medical Sciences Department, University of Aveiro, Aveiro, Portugal

^xUniversity of Lille, Inserm, CHU Lille, U1171 - Degenerative and vascular cognitive disorders, Lille, France

^yAix Marseille University, UMR-CNRS 7289, Service de Pharmacologie Clinique, AP-HM, Marseille, France

^zMemory Clinic and LANVIE - Laboratory of Neuroimaging of Aging, University Hospitals and University of Geneva, Geneva, Switzerland

Accepted 26 June 2018

Abstract. It is an open issue whether blood biomarkers serve to diagnose Alzheimer's disease (AD) or monitor its progression over time from prodromal stages. Here, we addressed this question starting from data of the European FP7 IMI-PharmaCog/E-ADNI longitudinal study in amnesic mild cognitive impairment (aMCI) patients including biological, clinical, neuropsychological (e.g., ADAS-Cog13), neuroimaging, and electroencephalographic measures. PharmaCog/E-ADNI patients were classified as "positive" (i.e., "prodromal AD"; $n=76$) or "negative" ($n=52$) based on a diagnostic cut-off of A β ₄₂/P-tau in cerebrospinal fluid as well as APOE ϵ 4 genotype. Blood was sampled at baseline and at two follow-ups (12 and 18 months), when plasma amyloid peptide 42 and 40 (A β ₄₂, A β ₄₀) and apolipoprotein J (clusterin, CLU) were assessed. Linear Mixed Models found no significant differences in plasma molecules between the "positive" (i.e., prodromal AD) and "negative" groups at baseline. In contrast, plasma A β ₄₂ showed a greater reduction over time in the prodromal AD than the "negative" aMCI group ($p=0.048$), while CLU and A β ₄₀ increased, but similarly in the two groups. Furthermore, plasma A β ₄₂ correlated with the ADAS-Cog13 score both in aMCI patients as a whole and the prodromal AD group alone. Finally, CLU correlated with the ADAS-Cog13 only in the whole aMCI group, and no association with ADAS-Cog13 was found for A β ₄₀. In conclusion, plasma A β ₄₂ showed disease progression-related features in aMCI patients with prodromal AD.

Keywords: Amnesic mild cognitive impairment, amyloid-beta peptide, biomarkers, clinical trial, clusterin, PharmaCog project, prodromal Alzheimer's disease

INTRODUCTION

A current hot-spot of clinical research in Alzheimer's disease (AD) deals with the discovery of sensitive, specific, non-invasive, and cost-effective biomarkers useful for the diagnosis or the quantification of illness progression from prodromal stage (amnesic mild cognitive impairment, aMCI) to dementia stage, featuring severe cognitive deficits and disability in self-care and autonomy [1]. According to the current guidelines, as reported in Dubois et al. [1], diagnostic biomarkers of AD include low concentration of A β ₄₂ and high concentration of total tau (T-tau) or phospho-tau (P-tau) in cerebrospinal fluid (CSF), or evidence of significant amyloid deposition and tau aggregation in the brain in maps of positron emission tomography (PET). On the other hand, topographic or progression biomarkers of AD measure

atrophy of hippocampus or cerebral cortex, as quantified in structural magnetic resonance imaging (MRI), and hypometabolism in posterior cingulate, parietal, temporal, and hippocampal regions, as measured by FDG-positron emission tomography (FDG-PET) [1]. Of note, the use of those procedures in AD clinical practice is relatively limited by invasiveness of the protocols or high-cost of instruments and exams.

The discovery of reliable blood biomarkers of AD would be a great improvement, as they are minimally invasive, potentially accessible everywhere, and intrinsically cost-effective. The current state-of-the-art in the field has been recently reviewed [2, 3]. Many different biological targets have been proposed as blood biomarkers of prodromal AD, as those based on the amyloid- β protein precursor (A β PP) processing, the molecules related to tangle pathology coming from tau dysregulation, markers

of neurodegeneration and microglia/astrocyte activation as neurofilament light (NF-L), neurogranin (Ng), sTREM2 and YKL-40, or AD-associated protein accumulation (for instance, α -synuclein and TDP-43), up to microRNA (miRNA) quantification [2–7]. Unfortunately, literature results are contradictory, probably because of a lack of standardization in assays and clinical inclusion criteria. In particular, many studies were centered on the comparison of healthy controls and AD patients, a choice that might be a confounding factor for diagnostic or prognostic purposes [8–13].

Clusterin (apolipoprotein J, CLU) has also been suggested as candidate plasma biomarker of AD, based on CLU gene involvement in AD risk and the availability of several association studies assessing CSF or plasma CLU level in prodromal dementia [14–18].

Keeping in mind the above scenario, it is critical to underscore that some differences in blood biomarkers between AD patients and age-matched healthy controls with normal cognition may be unspecific for disease neuropathology. In other words, those biomarkers might be sensitive not only to AD but also to other disorders inducing cognitive deficits in seniors. To account for this confounding variable, here we took advantage from the prospective, multi-centric clinical study named “IMI-PharmaCog-European ADNI” (<http://www.pharmacog.org>), where 144 aMCI patients were followed over time with the collection of clinical, neuropsychological, structural and functional MRI, electroencephalographic (rsEEG/ERP), CSF, and blood data. In the present study, we specifically tested the hypothesis that blood plasma measured molecules A β_{42} , A β_{40} , and CLU may be able to diagnose AD and monitor its progression (i.e., a period of 18 months) from prodromal disease stages.

This article is part of a Mini Forum of Journal of Alzheimer's disease on PharmaCog/E-ADNI matrix of biomarkers of prodromal AD in patients with aMCI.

MATERIALS AND METHODS

Participant clinical features and classification

Participants' demographics, clinical, and neuropsychological data have been described in recent PharmaCog/E-ADNI studies. Briefly, 147 aMCI patients were enrolled in 13 European memory

clinics of the Innovative Medicine Initiative (IMI) PharmaCog/E-ADNI project. The protocol of this study was designed in the framework of IMI and was aimed at improving the pathway of drug discovery in AD, with a main interest in disease-modifying drugs reducing A β_{42} in the brain in AD patients at the prodromal stage of aMCI. Inclusion criteria were age between 55 and 90 years; complaints of memory loss; Mini-Mental State Examination (MMSE) score of ≥ 24 ; Clinical Dementia Rating score of 0.5; score on the logical memory test < 1 standard deviation from the age-adjusted mean; 15-item Geriatric Depression Scale score ≤ 5 ; and no neurologic, systemic or psychiatric comorbidity [19, 20]. We applied the diagnostic criteria for AD suggested by IWG-2 [1] and AA-NIH [21] guidelines. According to these guidelines, even at prodromal stage, AD is associated with 1) a reduction of CSF A β_{42} and its increase at brain level and with 2) an increase of phospho-tau in both CSF and brain. IWG-2 and AA-NIH guidelines state that the diagnosis of AD can be done with A β_{42} and tau biomarkers even with a single recording session, as AD is considered a progressive disease [1, 21]. Before study enrollment, each patient gave signed informed consent in compliance to the guidelines of local ethical committees. Data collected and generated have been always used in anonymous and aggregated form.

The aMCI patients were classified into two groups named “positive” (i.e., prodromal AD) and “negative” (i.e., stable aMCI) based on baseline CSF A β_{42} /P-tau levels as well as apolipoprotein E (APOE) $\epsilon 4$ genotype [22]. Specifically, aMCI patients were considered “positive” with CSF A β_{42} /P-tau levels lower than 15.2 for APOE $\epsilon 4$ carriers and lower than 8.9 for APOE $\epsilon 4$ non-carriers, otherwise “negative”. These cut-offs were obtained by applying model-based classification methods (mixture models) [23] on baseline CSF A β_{42} /P-tau distribution, adjusted for APOE $\epsilon 4$ genotype.

Blood collection and plasma separation

All procedures involving patients were done after eligibility check according to inclusion criteria and informed consent signature. Blood for plasma preparation was collected by venipuncture at baseline, at month 12 and 18 during follow-up, resulting in a total of 3 venipuncture sessions.

Procedures for blood withdrawal and processing were standardized for all centers. Blood samples were processed within 1 h from the puncture.

Briefly, 10 mL of blood were collected into EDTA tubes and centrifuged at 1600 g/4°C/15 min. The supernatant (plasma) was transferred into a new polypropylene tube after gentle shaking to avoid gradient effects and divided into aliquots of 250 μ L in dry ice. Plasma was kept frozen at -80°C in temperature-monitored ultra-freezers (-80°C \pm 5°C) until required.

Amyloid peptides 40 and 42 (A β_{40} , A β_{42}) and clusterin (CLU) ELISA determination

The assessment of plasma A β_{42} and A β_{40} was done with ELISA kits from Fujirebio (Fujirebio, Japan), namely Innostest β -amyloid(1-42) (code 81576), in presence of high-sensitivity secondary antibody conjugate (code 81587), and Innostest β -amyloid(1-40) (code 81585). The limit of detection (LOD) for the kits were 4.0 and 5.0 pg/mL, respectively. The assays dynamic ranges were 7.8–1000 pg/mL and 6.8–1000 pg/mL, respectively.

Human clusterin (apolipoprotein J) concentration in plasma was measured by an ELISA kit (BioVendor – Laboratorní medicína a.s., Czech Republic, code BV53031). The kit limit of detection (LOD), defined as concentration of analyte giving absorbance higher than mean absorbance of blank plus three standard deviations of the absorbance of blank, was 0.5 ng/mL. The assay dynamic range was from 5 to 160 ng/mL.

Statistical analysis

Statistics was done by SPSS software for descriptive statistics and R software (version 3.4.1) for the computational analysis based on Linear Mixed Models. The aMCI participants' features were compared by parametric Student's *t*-tests or non-parametric Mann-Whitney's U-test, depending on Gaussian distribution and using Chi-square tests for categorical data. Due to the exploratory nature of the present study, significance level was set at $p < 0.05$ [24].

Two different types of Linear Mixed Models (LMMs, performed by R-package lme4) for repeated measures were used with all available values of the plasma biomarkers (A β_{42} , A β_{40} , A β_{42} /A β_{40} , and CLU) and clinical variables. Random intercept and random slope were considered to account for individual differences at baseline as well as for individual change over follow-up. The output of the LMMs was presented in terms of standardized β coefficient, corresponding *p*-value and effect size (pseudo η^2) calculated as ratio of explained variability

of interaction effect on total variability of each model.

In detail, a first group of LMMs was conducted to identify plasma measured molecules (dependent variable) that differently progressed in prodromal AD compared to stable aMCI patients in the whole aMCI group. This was performed by adding age, gender, education, time, group (corresponding to CSF status), time X group interaction as covariates. Only plasma measures with significant group X time interaction were of interest, meaning that they differently progressed over-time between groups. A second group of LMMs was conducted to evaluate the association between cognitive changes (ADAS-Cog 13, dependent variable) and peripheral plasma measured molecules, in the whole group and in prodromal AD patients only. This was performed by adding age, gender, time and biomarker as covariates. Plasma assessed molecules showing a significant effect of the biomarker factor were of interest, meaning that they were associated to cognitive decline.

RESULTS

Patients' features

In the IMI-PharmaCog/E-ADNI study, a cohort of 144 aMCI out of the 147 enrolled patients underwent CSF standard dementia biomarker evaluation (A β_{42} , T-tau, P-tau) and APOE genotyping. Table 1 summarizes IMI-PharmaCog/E-ADNI cohort demographic and clinical features. Due to plasma unavailability of some patients, the number of aMCI patients who were included for plasma measure assessment was lower (i.e., 128 aMCI patients). The main demographic and clinical characteristics of the included patients are reported in Table 2. In both Tables 1 and 2, after stratification according to baseline A β_{42} /P-tau ratio values in the CSF as a function of APOE genotype [22], the aMCI patients were classified as “positive” (prodromal AD) or “negative”. We also statistically compared mean values reported in Table 2 to Table 1 in order to exclude a selection bias due to the unavailable samples in the plasma analysis. There were no differences between the “positive” (prodromal AD) and “negative” aMCI groups (data not shown).

Amyloid peptides 40 and 42 (A β_{40} , A β_{42}), clusterin (CLU), and prodromal AD

Figures 1 to 4 summarize the results of an exploratory statistical analysis about plasma A β_{42} ,

Table 1

Clinical and socio-demographic features of amnesic mild cognitive impairment (aMCI) patients recruited for the IMI-PharmaCog/E-ADNI study. Patients were stratified as CSF Aβ₄₂/P-tau "positive" and "negative" according to APOE4-specific cut-offs [22]

	"negative" MCI (n = 63)	"positive" MCI (n = 81)	<i>p</i> ^a
Age, mean (SD)	68.3 (8.4)	69.8 (6.3)	0.208
Sex, F/M, No.	36/27	46/35	1.000
Education, mean (SD)	10.0 (4.3)	11.1 (4.4)	0.115
APOE ε4 carriers, No. (%)	3 (5)	63 (78)	<0.001
MMSE, mean (SD)	27.1 (1.8)	26.2 (1.8)	0.006
ADAS-Cog13, mean (SD) ^{b,c}	19.1 (5.9)	21.6 (8.1)	0.052
CSF biomarkers, mean (SD, pg/mL)			
Aβ ₄₂	949 (244)	495 (132)	<0.001
P-tau	47 (15)	84 (38)	<0.001
T-tau	301 (149)	614 (394)	<0.001

^aParametric *t*-test (or corresponding non-parametric Mann-Whitney) for continuous Gaussian (or non-Gaussian) distributed variables and Chi-square test for categorical data. ^bRange 0–85, with 0 as the best score. ^cInformation was missing for 1 patient. ADAS-Cog13, Alzheimer Disease Assessment Scale-Cognitive Subscale, version 13; Aβ₄₂, amyloid-β 42; APOE, apolipoprotein E; CSF, cerebrospinal fluid; P-tau, tau phosphorylated at threonine 181; SD, standard deviation; T-tau, total tau.

Table 2

IMI-PharmaCog/E-ADNI study patients who underwent plasma assessment

	"negative" MCI (n = 52)	"positive" MCI (n = 76)	<i>p</i> ^a
Age, mean (SD)	68.2 (8.4)	69.5 (5.9)	0.30
Sex, F/M, No.	26/26	43/33	0.46
Education, mean (SD)	10.0 (4.2)	11.2 (4.5)	0.13
APOE ε4 carriers, No. (%)	2 (3.8)	61 (80)	<0.001
MMSE, mean (SD)	27.0 (1.7)	26.2 (1.8)	0.012
ADAS-Cog13, mean (SD) ^b	18.8 (5.7)	21.6 (8.1)	0.033
CSF biomarkers, mean (SD, pg/mL)			
Aβ ₄₂	930 (239)	499 (133)	<0.001
P-tau	46 (15)	84 (37)	<0.001
T-tau	295 (146)	619 (397)	<0.001

^aParametric *t*-test (or corresponding non-parametric Mann-Whitney) for continuous Gaussian (or non-Gaussian) distributed variables and by Chi-square test for categorical data. ^bRange 0–85, with 0 as the best score. ADAS-Cog13, Alzheimer Disease Assessment Scale-Cognitive Subscale, version 13; Aβ₄₂, amyloid-β 42; APOE, apolipoprotein E; CSF, cerebrospinal fluid; P-tau, tau phosphorylated at threonine 181; SD, standard deviation; T-tau, total tau.

Aβ₄₀, Aβ₄₂/Aβ₄₀ ratio, and CLU in the "positive" (prodromal AD) and "negative" aMCI groups at the three recording timepoints (T0, T12, and T18 months). The figures also show the same plasma measures in aMCI patients as a whole group. Exploratory univariate statistical tests compared the mean values between the groups or between timepoints (*p* < 0.05).

Figure 1 shows the results for plasma Aβ₄₂. There was no significant mean difference between the two aMCI groups at any time (*p* > 0.05). Furthermore, there was no significant mean difference among the three timepoints when all aMCI patients were considered as a whole group (*p* > 0.05).

Figure 2 plots the results for plasma Aβ₄₀. There was a marginal significance when comparing T0 level between the two aMCI groups (*p* = 0.06), with mean values slightly lower in the "positive" than the "negative" group. Furthermore, there was no significant mean difference among the three timepoints when all aMCI patients were considered together (*p* > 0.05).

Figure 3 illustrates the results for plasma Aβ₄₂/Aβ₄₀ ratio. There was no significant mean difference between the two aMCI groups at any time (*p* > 0.05). Moreover, there was no difference among the three timepoints when all aMCI patients were grouped.

Finally, Fig. 4 describes the results for CLU. There was no significant mean difference between the two aMCI groups at any time (*p* > 0.05). In contrast, CLU increased in all aMCI patients as a whole group over time, with a significant difference from T0 to both T12 and T18 (*p* < 0.001). This difference was common to the "negative" and "positive" aMCI groups.

To refine the above statistical analysis, we applied Linear Mixed Models to the plasma measures using the factors Group ("positive" and "negative" aMCI) and Time (T0, T12, and T18). Table 3 reports the proportion of variability in plasma measures over time explained by Time, Group (CSF status as defined by Aβ₄₂/P-tau), and Time X Group interaction. All plasma measures considered reported a significant effect of Time (for Aβ₄₂, *p* < 0.001; Aβ₄₀, *p* = 0.009; Aβ₄₂/Aβ₄₀ ratio, *p* = 0.006; CLU, *p* < 0.001), showing their changes over time (T0 to T18) regardless of the group. Conversely, none of those measures showed a significant "diagnostic" Group effect (*p* > 0.05).

Noteworthy, there was a significant Time X Group effect for plasma Aβ₄₂, showing that compared to the "negative" aMCI group, the "positive" (prodromal AD) aMCI group was characterized by a significant decrease of the measure over time (*p* < 0.05), in line with the feature of a disease progression biomarker.

Correlation of Aβ₄₀, Aβ₄₂, Aβ₄₂/Aβ₄₀, and clusterin (CLU) with ADAS-cog13 score

Table 4 reports the results of Linear Mixed Models testing the correlation over time of plasma measured molecules (Aβ₄₂, Aβ₄₀, Aβ₄₂/Aβ₄₀ ratio, and CLU)

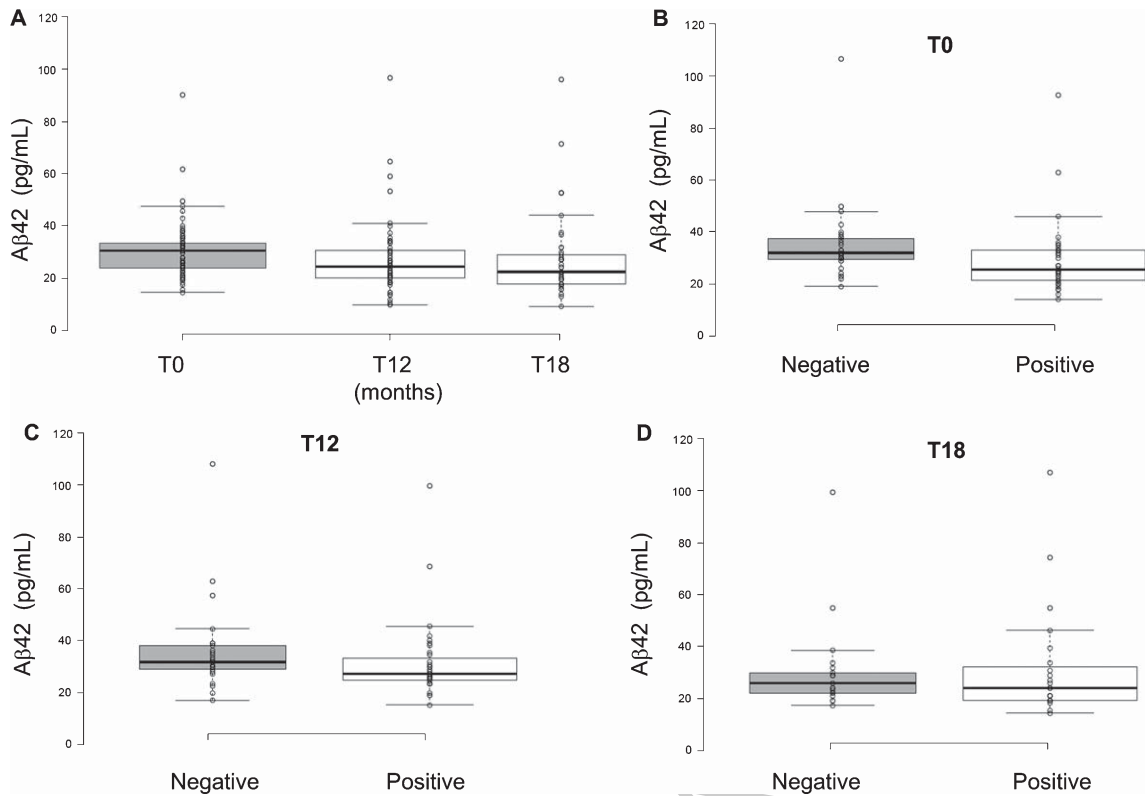


Fig. 1. Plasma A β_{42} levels in the IMI-PharmaCog/E-ADNI study. (A) Whole aMCI group over time; (B) Baseline (T0); (C) Assessment after 12 months from T0 (T12); (D) Assessment 18 months from T0 (T18). Data are presented as box-plot, with the upper box line indicating the 3rd quartile, the lower one the 1st quartile and the bold line the median. The single measures are also indicated as empty circles. “Negative” and “positive” refer to the classification of aMCI according to the APOE-specific cut-offs [22].

with ADAS-Cog13 score. When all aMCI patients were considered as a whole, there was a significant association with ADAS-Cog13 score for all plasma measures ($p < 0.003$) with the only exception of A β_{40} . This association reflected the increase of ADAS-Cog13 scores over the follow-up period due to a progressive cognitive impairment of the whole population.

When the “positive” (prodromal AD) aMCI group was considered alone, there was still a significant association between plasma A β_{42} ($p < 0.05$) and ADAS-Cog13 score, thus suggesting a clinical relevance of that measure. The same was true for plasma A β_{42} /A β_{40} ratio ($p < 0.05$). Instead, no association was found for A β_{40} alone or CLU ($p > 0.05$).

DISCUSSION

The IMI-PharmaCog/E-ADNI longitudinal study aimed at testing candidate biomarkers suitable to diagnose prodromal AD in aMCI patients and track

disease progression over time (up to 24 months). As a novelty in the field of biomarker discovery for aMCI progressing to AD, to overcome the possible confounding effect of comparing healthy subjects to cognitively impaired patients, we used a control group with the same kind of amnesic deficits of the experimental group. Specifically, we compared blood plasma biomarkers in aMCI patients “positive” (i.e., prodromal AD) versus “negative” classified basing on their CSF A β_{42} /P-tau level and APOE $\epsilon 4$ carrier status [22]. In the present investigation, we tested the diagnostic or disease monitoring value of plasma A β_{42} , A β_{40} , and CLU in aMCI patients with probable prodromal AD. Among many other plasma biomarker candidates, the present ones have obvious links to AD pathogenic mechanisms and a direct counterpart on relevant CSF and PET diagnostic measures used in AD research.

However, the collected plasma and DNA samples may be suitable for other AD blood biomarker candidates of interest, including a variety of protein, lipid, and microRNA species, as well as mitochondrial

341
342
343
344
345
346
347
348
349
350
351
352
353
354
355
356
357
358
359
360
361
362

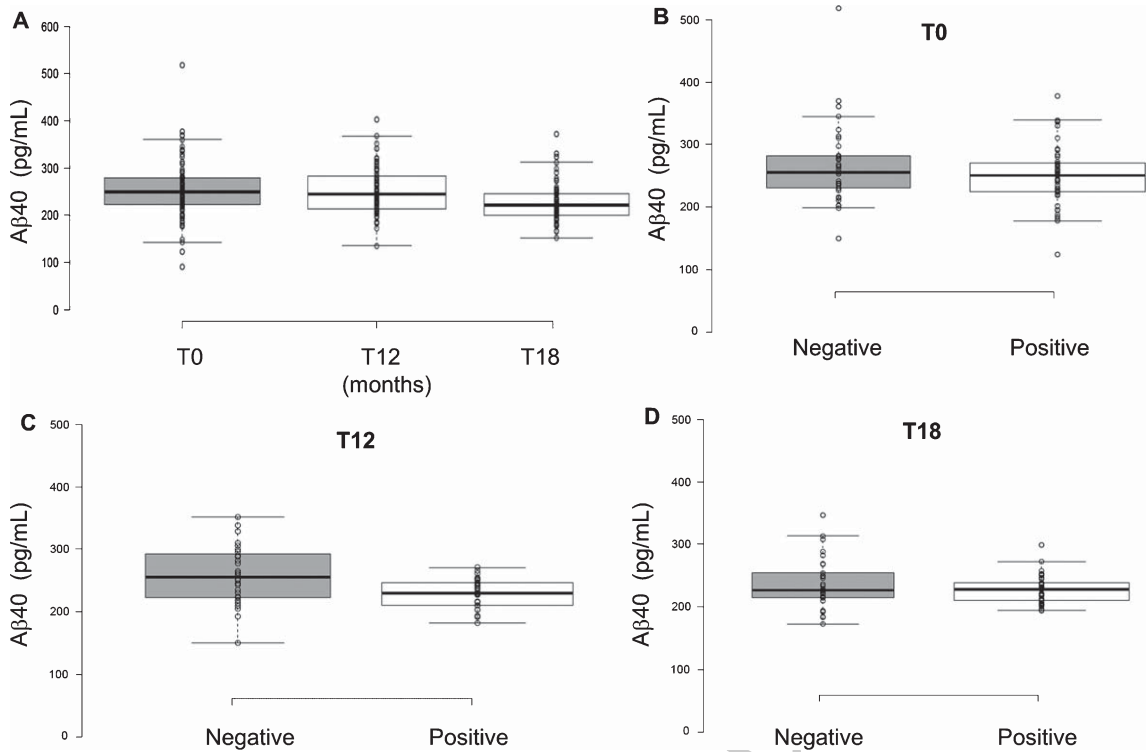


Fig. 2. Plasma A β_{40} levels in the IMI-PharmaCog/E-ADNI study. (A) Whole aMCI group over time; (B) Baseline (T0); (C) Assessment 12 months from T0 (T12); (D) Assessment 18 months from T0 (T18). Data are presented as box-plots, with the upper line indicating the 3rd quartile, the lower one the 1st quartile and the bold line the median. The single measures are also indicated as empty circles. "Negative" and "positive" refer to the classification of aMCI according to the calculated algorithm, as reported above.

genes or DNA epigenetic modification patterns [25–32]. They may be evaluated in future studies carried out in PharmaCog/E-ADNI "positive" and "negative" aMCI groups.

Concerning the diagnostic value of the assessed blood biomarker candidates, the present results showed that plasma A β_{42} was not specifically associated with the group of "positive" aMCI patients (prodromal AD) when the three recordings (baseline, 12, and 18 months) were considered as a whole. Furthermore, plasma A β_{42} , A β_{42} /A β_{40} ratio, and CLU in all aMCI patients as a whole were correlated with cognitive status as measured by ADAS-Cog13 score, namely the neuropsychological procedure typically used in AD clinical trials [33, 34]. These findings suggest that plasma A β_{42} , A β_{42} /A β_{40} ratio, and CLU are clinically relevant for aMCI cognitive status and may partially explain the variance of the results in previous studies where plasma A β_{42} and A β_{40} (or their ratio) were informative on AD status, especially when AD patients with dementia were compared to seniors with intact cognition [8]. Indeed, this association between plasma biomarkers

and AD status was not always confirmed [11, 13]. So large variance of results in previous investigations might partially depend on cognitive status of participants in the AD and control groups as well as disease stage of AD participants. Of course, technical reasons may also contribute to the observed variance in previous findings [35, 36]. For example, the importance of plasma A β_{42} as a biomarker of AD has been recently re-evaluated thanks to the contribution of Nakamura and colleagues, who measured plasma A β_{42} with an advanced high-performance procedure based on immunoprecipitation followed by mass spectrometry [7]. In light of this improved protocol, they were able to demonstrate an interesting correlation between plasma A β_{42} measurements and CSF and PET biomarker counterparts in AD patients [7]. In addition, Nabers and colleagues developed an immune-infrared sensor to measure the secondary structure change of all soluble A β peptides in human plasma that correlated to CSF AD biomarkers and amyloid PET in a cross-sectional study and was predictive of AD in a prospective cohort [37].

363
364
365
366
367
368
369
370
371
372
373
374
375
376
377
378
379
380
381
382
383
384
385

386
387
388
389
390
391
392
393
394
395
396
397
398
399
400
401
402
403
404
405
406
407
408

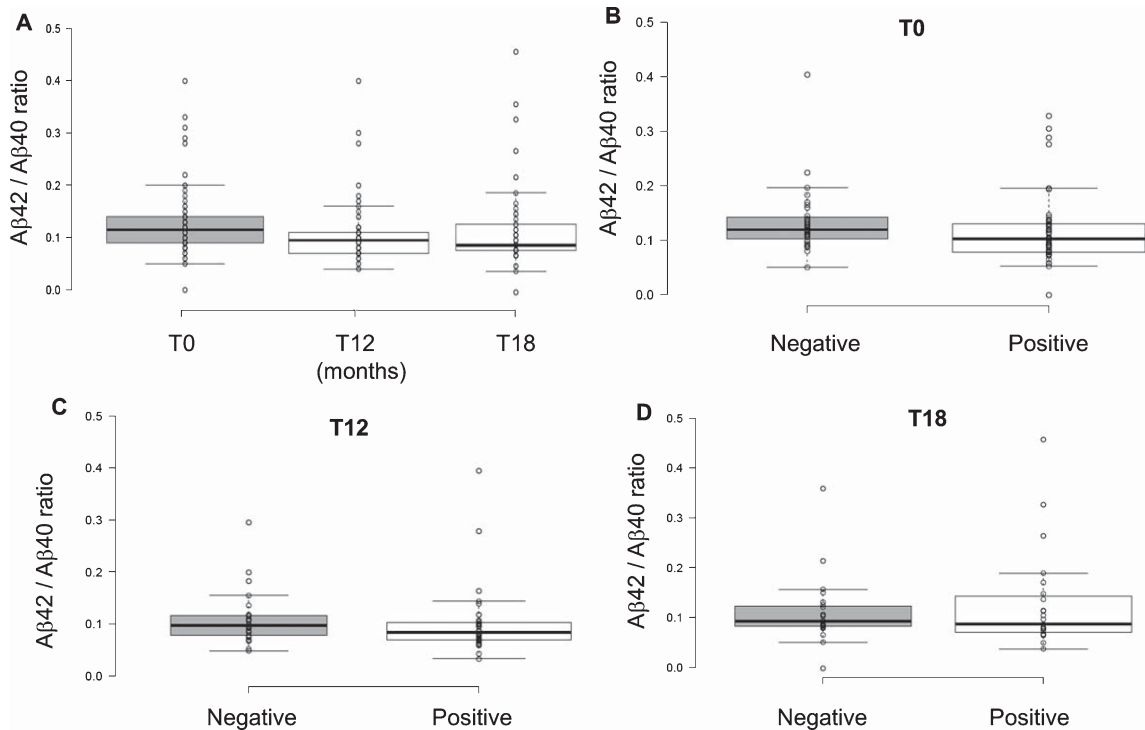


Fig. 3. Plasma A β_{42} /A β_{40} ratios in the IMI-PharmaCog/E-ADNI study. (A) Whole aMCI group over time; (B) Baseline (T0); (C) Assessment 12 months from T0 (T12); (D) Assessment 18 months from T0 (T18). Data are presented as box-plots, with the upper line indicating the 3rd quartile, the lower one the 1st quartile and the bold line the median. The single measures are also indicated as empty circles. “Negative” and “positive” refer to the classification of aMCI as already described.

409 As for the informative value of the considered
 410 plasma biomarkers on prodromal AD progression, the
 411 present results show that plasma A β_{42} was specif-
 412 ically associated with the “positive” aMCI group
 413 (prodromal AD) as a function of time (i.e., follow-
 414 ups at 12 and 18 months). The prodromal AD patients
 415 showed a specific significant decrease of plasma
 416 A β_{42} over time, which correlated with the deter-
 417 ioration of cognitive performance as revealed by
 418 ADAS-cog13 scores. To our knowledge, this is the
 419 first demonstration that plasma A β_{42} may be used
 420 as a biomarker of prodromal AD progression, tak-
 421 ing into account the confounding variable of aMCI
 422 patients’ cognitive status.

423 Available literature shows mixed results about
 424 the possible correlation between CSF and plasma
 425 A β_{42} . In our study, we checked for this correlation
 426 in “positive” aMCI subjects, finding no evidence of
 427 correlation (data not shown). Indeed, some previous
 428 studies failed in demonstrating a significant relation-
 429 ship [38, 39] while other were successful in finding a
 430 correlation, either positive [8] or negative [40]. Here
 431 we report that compared with the “negative” aMCI

432 subjects, the “positive” aMCI showed a steeper
 433 longitudinal lowering in the A β_{42} at plasma level
 434 (interaction between Group x Time factors) but
 435 not a lowering considering all recording sessions
 436 as a whole (i.e., no Group factor effect). This out-
 437 come cannot be explained by an effect of different
 438 cognitive deficits in the experimental (“positive”
 439 MCI) and control (“negative” MCI) groups, as both
 440 were MCI (indeed, the condition of MCI might
 441 theoretically be due not only to AD neuropathology
 442 but also other parallel causes affecting cognitive
 443 functions, namely a cerebrovascular disease). A
 444 conclusive explanation of the above results requires
 445 further investigation. We can just speculate that
 446 plasma A β_{42} may be influenced not only by the brain
 447 amyloidosis but also by the interaction between such
 448 process and others related to AD (e.g., tauopathy and
 449 neurodegeneration). However, any interpretation of
 450 the results should take into account that our study
 451 focused on a limited time of follow-up (i.e., until
 452 18–24 months) and that CSF could be collected
 453 only at baseline and after 18 months. Therefore, our
 454 findings are a proof-of-concept to be cross-validated

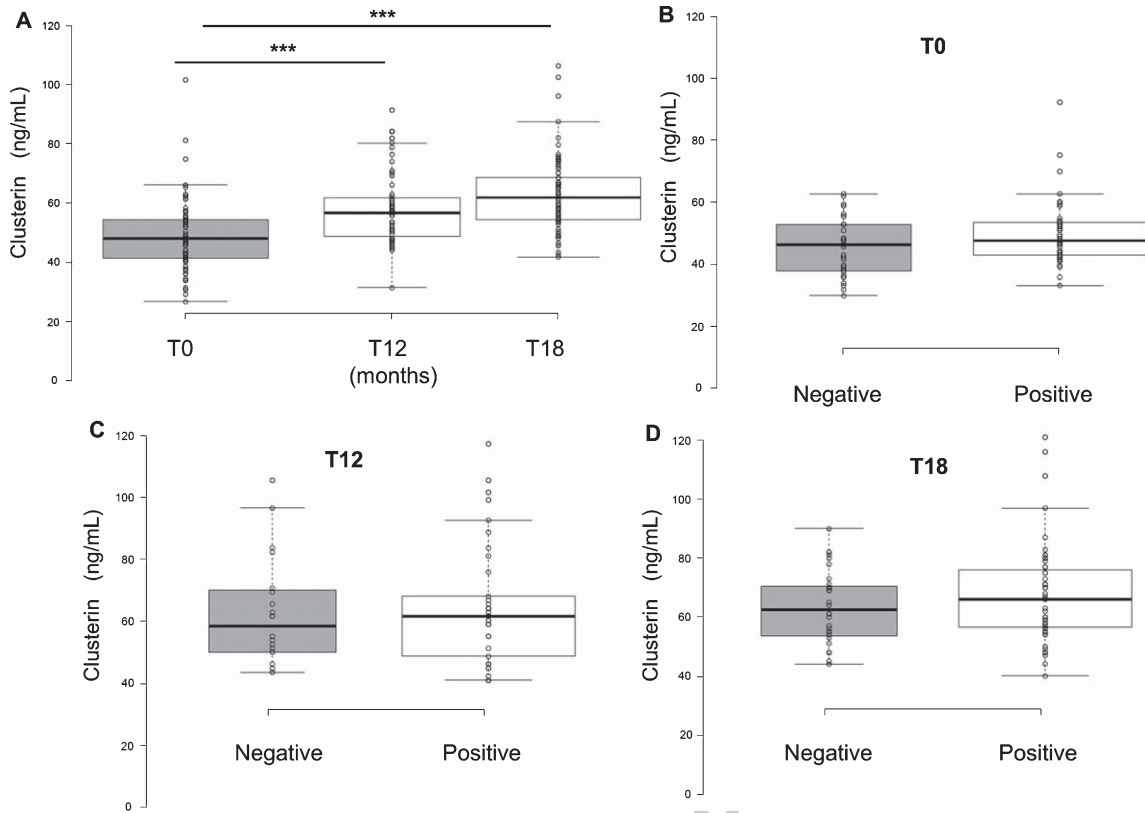


Fig. 4. Plasma clusterin (CLU) in the IMI-PharmaCog/E-ADNI study. (A) Whole aMCI group over time; (B) Baseline (T0); (C) Assessment 12 months from T0 (T12); (D) Assessment 18 months from T0 (T18). Data are presented as box-plots, with the upper line indicating the 3rd quartile, the lower one the 1st quartile and the bold line the median. The single measures are indicated as empty circles. For “negative” and “positive” aMCI classification, see above. ****p* < 0.001 versus T0, ANOVA and Tukey’s *post-hoc* test.

Table 3

Linear Mixed Models for the analysis of selected plasma molecules in aMCI patients stratified as “positive”, as prodromal AD, and “negative” as a control group, according to cut-offs of CSF Aβ₄₂/P-tau [22]. The model included age, sex, baseline MMSE score, Time, Group (Aβ₄₂/P-tau status), and Time X Group interaction as predictors. Significant (*p* < 0.05) effects are shown in bold

Measure (dependent variable)	Time		Group		Time X Group		Pseudo η^2 (Effect size)
	Std β	<i>p</i>	Std β	<i>p</i>	Std β	<i>p</i>	
Aβ ₄₂	0.209	<0.0001	0.011	0.937	0.151	0.048	0.25
Aβ ₄₀	0.206	0.009	0.142	0.286	0.036	0.815	0.01
Aβ ₄₂ /Aβ ₄₀	0.193	0.0006	0.062	0.725	0.147	0.326	0.01
CLU	0.462	<0.001	0.085	0.562	0.062	0.663	0.01

Std β , standardized β coefficient of Linear Mixed Model; CLU, clusterin (apolipoprotein J).

455 with a longitudinal study in which Aβ₄₂ in the CSF
456 and plasma are systematically recorded in positive
457 MCI subjects over time.

458 The second plasma biomarker investigated in the
459 present study was clusterin (apolipoprotein J, CLU),
460 based on the promising literature addressing the role
461 of CLU in blood-based early AD diagnosis. In fact,
462 it was reported that CLU levels are elevated in brain,
463 CSF, and plasma of AD patients with dementia and
464 MCI [41]. Moreover, CLU is functionally associated

465 with amyloid species, and many genetic association
466 studies have confirmed its role as a predisposing fac-
467 tor for AD [42–45]. Despite these considerations, we
468 were unable to show a significant value of CLU nei-
469 ther in prodromal AD diagnosis nor in the disease
470 progression. There was, however, a slight increase
471 of plasma CLU over time both in “negative” and
472 “positive” aMCI groups, suggesting that this blood
473 biomarker may track the progression of brain disor-
474 ders but not specifically for AD. It can be speculated

465
466
467
468
469
470
471
472
473
474

Table 4
 Longitudinal Mixed Model Analysis of the association between cognitive decline (ADAS-Cog 13, dependent variable) and peripheral circulating molecules in the whole group and in the A β ₄₂/P-tau positive MCI patients [22]. Significant ($p < 0.05$) effects are shown in bold

Measure (independent variable)	Whole MCI group		A β ₄₂ /P-tau positive MCI patients	
	Biomarker		Biomarker	
	Standardized β	p	Standardized β	p
A β ₄₂	0.267	0.003	0.225	0.046
A β ₄₀	0.047	0.346	0.079	0.150
A β ₄₂ /A β ₄₀	0.225	0.002	0.226	0.016
CLU	0.149	0.002	0.096	0.092

CLU, clusterin (apolipoprotein J).

that this blood biomarker may have a slower variation with disease onset and progression in comparison to plasma A β ₄₂, and increased amyloid burden may be required to reveal robust CLU differential expression in brain or in the periphery. In the present experimental design, the plasma follow-up time (18 months) may be too limited to conclusively demonstrate an AD-specific variation of CLU longitudinally.

In conclusion, we suggest that after the diagnosis of aMCI according to criteria based on CSF A β ₄₂ lowering and P-tau increase [1, 21], also plasma A β ₄₂ measured with standard ELISA procedure may be sensitive to prodromal AD progression and cognitive impairment. Instead, we did not confirm a diagnostic value of plasma A β ₄₂, at least at that prodromal stage. We are confident that in a short-term period other studies may cross-validate our results, also taking advantage from recent technological advancements in the assessment of plasma A β ₄₂ [7], and we propose to speed-up plasma A β ₄₂ assay translation to clinical setting. Finally, our results on plasma A β ₄₂ may be integrated by future studies that systematically investigate the relationship between CSF versus plasma phospho-tau and total tau, considering the remarkable steps forward in the measurement of those biomarkers [46].

ACKNOWLEDGMENTS

The IMI-PharmaCog/E-ADNI project was funded by the European seventh framework program and European Federation of Pharmaceutical Industries and Associations (EFPIA) for the Innovative Medicine Initiative (Grant no. 115009; <http://www.pharmacog.org>).

In 2017, G.F. and C.B. were partially supported by H2020 ITN-ETN MSCA project "BBDiag" (Grant no. 721281; <http://bbdiag-itn-etn.eu/>).

The authors are grateful to all members and collaborators and to aMCI patients who agreed to participate in this study. We thank Judith Baggott for English editing.

Authors' disclosures available online (<https://www.j-alz.com/manuscript-disclosures/18-0321r1>).

REFERENCES

- Dubois B, Feldman HH, Jacova C, Hampel H, Molinuevo JL, Blennow K, DeKosky ST, Gauthier S, Selkoe D, Bateman R, Cappa S, Crutch S, Engelborghs S, Frisoni GB, Fox NC, Galasko D, Habert MO, Jicha GA, Nordberg A, Pasquier F, Rabinovici G, Robert P, Rowe C, Salloway S, Sarazin M, Epelbaum S, de Souza LC, Vellas B, Visser PJ, Schneider L, Stern Y, Scheltens P, Cummings JL (2014) Advancing research diagnostic criteria for Alzheimer's disease: The IWG-2 criteria. *Lancet Neurol* **13**, 614-629.
- Zetterberg H, Blennow K (2018) From cerebrospinal fluid to blood: The third wave of fluid biomarkers for Alzheimer's disease. *J Alzheimers Dis* **64**(s1), S271-S279.
- Shi L, Baird AL, Westwood S, Hye A, Dobson R, Thambisetty M, Lovestone S (2018) A decade of blood biomarkers for Alzheimer's disease research: An evolving field, improving study designs, and the challenge of replication. *J Alzheimers Dis* **62**, 1181-1198.
- Ovod V, Ramsey KN, Mawuenyega KG, Bollinger JG, Hicks T, Schneider T, Sullivan M, Paumier K, Holtzman DM, Morris JC, Benzinger T, Fagan AM, Patterson BW, Bateman RJ (2017) Amyloid β concentrations and stable isotope labeling kinetics of human plasma specific to central nervous system amyloidosis. *Alzheimers Dement* **13**, 841-849.
- Delvaux E, Mastroeni D, Nolz J, Chow N, Sabbagh M, Caselli RJ, Reiman EM, Marshall FJ, Coleman PD (2017) Multivariate analyses of peripheral blood leukocyte transcripts distinguish Alzheimer's, Parkinson's, control, and those at risk for developing Alzheimer's. *Neurobiol Aging* **58**, 225-237.
- Kumar S, Vijayan M, Reddy PH (2017) MicroRNA-455-3p as a potential peripheral biomarker for Alzheimer's disease. *Hum Mol Genet* **1**, 3808-3822.
- Nakamura A, Kaneko N, Villemagne VL, Kato T, Doecke J, Doré V, Fowler C, Li QX, Martins R, Rowe C, Tomita T, Matsuzaki K, Ishii K, Ishii K, Arahata Y, Iwamoto S, Ito K, Tanaka K, Masters CL, Yanagisawa K (2018) High

- 555 performance plasma amyloid- β biomarkers for Alzheimer's
556 disease. *Nature* **554**, 249-254.
- 557 [8] Hanon O, Vidal JS, Lehmann S, Bombois S, Allinquant B,
558 Tréluyer JM, Gelé P, Delmaire C, Blanc F, Mangin JF, Bué L,
559 Touchon J, Hugon J, Vellas B, Galbrun E, Benetos A,
560 Berrut G, Paillaud E, Wallon D, Castelnovo G, Volpe-Gillot
561 L, Paccalin M, Robert PH, Godefroy O, Dantoine T, Camus
562 V, Belmin J, Vandel P, Novella JL, Duron E, Rigaud AS,
563 Schraen-Maschke S, Gabelle A, BALTAZAR study group
564 (2018) Plasma amyloid levels within the Alzheimer's pro-
565 cess and correlations with central biomarkers. *Alzheimers*
566 *Dement*. doi: 10.1016/j.jalz.2018.01.004
- 567 [9] Fandos N, Pérez-Grijalba V, Pesini P, Olmos S, Bossa M,
568 Villemagne VL, Doecke J, Fowler C, Masters CL, Sarasa
569 M, AIBL Research Group (2017) Plasma amyloid β 42/40
570 ratios as biomarkers for amyloid β cerebral deposition in
571 cognitively normal individuals. *Alzheimers Dement (Amst)*
572 **8**, 179-187.
- 573 [10] Lövheim H, Elgh F, Johansson A, Zetterberg H, Blennow
574 K, Hallmans G, Eriksson S (2017) Plasma concentra-
575 tions of free amyloid β cannot predict the development of
576 Alzheimer's disease. *Alzheimers Dement* **13**, 778-782.
- 577 [11] Janelidze S, Stomrud E, Palmqvist S, Zetterberg H, van
578 Westen D, Jeromin A, Song L, Hanlon D, Tan Hehir CA,
579 Baker D, Blennow K, Hansson O (2016) Plasma β -amyloid
580 in Alzheimer's disease and vascular disease. *Sci Rep* **6**,
581 26801.
- 582 [12] Ritchie C, Smailagic N, Noel-Storr AH, Takwoingi Y,
583 Flicker L, Mason SE, McShane R (2014) Plasma and cere-
584 brospinal fluid amyloid beta for the diagnosis of Alzheimer's
585 disease dementia and other dementias in people with mild
586 cognitive impairment (MCI). *Cochrane Database Syst Rev*
587 **6**, CD008782.
- 588 [13] Toledo JB, Shaw LM, Trojanowski JQ (2013) Plasma amy-
589 loid beta measurements - a desired but elusive Alzheimer's
590 disease biomarker. *Alzheimers Res Ther* **5**, 8.
- 591 [14] Elias-Sonnenschein LS, Helisalmi S, Natunen T, Hall A,
592 Paajanen T, Herukka SK, Laitinen M, Remes AM, Koivisto
593 AM, Mattila KM, Lehtimäki T, Verhey FR, Visser PJ, Soini-
594 nen H, Hiltunen M (2013) Genetic loci associated with
595 Alzheimer's disease and cerebrospinal fluid biomarkers in a
596 Finnish case-control cohort. *PLoS One* **8**, e59676.
- 597 [15] Schrijvers EM, Koudstaal PJ, Hofman A, Breteler MM
598 (2011) Plasma clusterin and the risk of Alzheimer disease. *JAMA*
599 **305**, 1322-1326.
- 600 [16] Jongbloed W, van Dijk KD, Mulder SD, van de Berg WD,
601 Blankenstein MA, van der Flier W, Veerhuis R (2015)
602 Clusterin levels in plasma predict cognitive decline and
603 progression to Alzheimer's disease. *J Alzheimers Dis* **46**,
604 1103-1110.
- 605 [17] Gupta VB, Doecke JD, Hone E, Pedrini S, Laws SM, Tham-
606 bisetty M, Bush AI, Rowe CC, Villemagne VL, Ames
607 D, Masters CL, Macaulay SL, Rembach A, Rainey-Smith
608 SR, Martins RN, AIBL Research Group (2015) Plasma
609 apolipoprotein J as a potential biomarker for Alzheimer's
610 disease: Australian Imaging, Biomarkers and Lifestyle
611 study of aging. *Alzheimers Dement (Amst)* **3**, 18-26.
- 612 [18] Haight T, Bryan RN, Meirelles O, Tracy R, Fornage M,
613 Richard M, Nasrallah I, Yaffe K, Jacobs Jr DR, Lewis C,
614 Schreiner P, Sidney S, Davatzikos C, Launer LJ (2018)
615 Associations of plasma clusterin and Alzheimer's disease-
616 related MRI markers in adults at mid-life: The CARDIA
617 Brain MRI sub-study. *PLoS One* **13**:e0190478.
- 618 [19] Galluzzi S, Marizzoni M, Babiloni C, Albani D, Antelmi L,
619 Bagnoli C, Bartres-Faz D, Cordone S, Didic M, Farotti L,
620 Fiedler U, Forloni G, Girtler N, Hensch T, Jovicich J,
621 Leeuwis A, Marra C, Molinuevo JL, Nobili F, Pariente J,
622 Parnetti L, Payoux P, Del Percio C, Ranjeva JP, Rolandi E,
623 Rossini PM, Schönknecht P, Soricelli A, Tsolaki M, Visser
624 PJ, Wiltfang J, Richardson JC, Bordet R, Blin O, Frisoni GB,
625 PharmaCog Consortium (2016) Clinical and biomarker pro-
626 filing of prodromal Alzheimer's disease in workpackage 5
627 of the Innovative Medicines Initiative PharmaCog project:
628 A 'European ADNI study'. *J Intern Med* **279**, 576-591.
- 629 [20] Nathan PJ, Lim YY, Abbott R, Galluzzi S, Marizzoni M,
630 Babiloni C, Albani D, Bartres-Faz D, Didic M, Farotti L,
631 Parnetti L, Salvadori N, Müller BW, Forloni G, Girtler N,
632 Hensch T, Jovicich J, Leeuwis A, Marra C, Molinuevo
633 JL, Nobili F, Pariente J, Payoux P, Ranjeva JP, Rolandi E,
634 Rossini PM, Schönknecht P, Soricelli A, Tsolaki M, Visser
635 PJ, Wiltfang J, Richardson JC, Bordet R, Blin O, Frisoni
636 GB, PharmaCog Consortium (2017) Association between
637 CSF biomarkers, hippocampal volume and cognitive func-
638 tion in patients with amnesic mild cognitive impairment
639 (MCI). *Neurobiol Aging* **53**, 1-10.
- 640 [21] Jack CR Jr, Bennett DA, Blennow K, Carrillo MC, Dunn B,
641 Haeblerlein SB, Holtzman DM, Jagust W, Jessen F, Karlaw-
642 ish J, Liu E, Molinuevo JL, Montine T, Phelps C, Rankin KP,
643 Rowe CC, Scheltens P, Siemers E, Snyder HM, Sperling R,
644 Contributors (2018) NIA-AA Research Framework: Toward
645 a biological definition of Alzheimer's disease. *Alzheimers*
646 *Dement* **14**, 535-562.
- 647 [22] Marizzoni M, Ferrari C, Galluzzi S, Jovicich J, Albani D,
648 Babiloni C, Didic M, Forloni G, Molinuevo JL, Nobili FM,
649 Parnetti L, Payoux P, Rossini PM, Schönknecht P, Soricelli
650 A, Tsolaki M, Visser PJ, Wiltfang J, Bordet R, Cavaliere L,
651 Richardson J, Blin O, Frisoni GB (2017) CSF biomarkers
652 and effect of apolipoprotein E genotype, age and sex on
653 cut-off derivation in mild cognitive impairment. *Alzheimers*
654 *Dement* **13**, P1319.
- 655 [23] Geoffrey McLachlan, David Peel (2000) Finite Mixture
656 Models. John Wiley & Sons, Inc. New York. ISBN: 978-
657 0-471-00626-8
- 658 [24] Bender R, Lange S (2001) Adjusting for multiple testing-
659 when and how? *J Clin Epidemiol* **54**, 343-349.
- 660 [25] Varma VR, Oommen AM, Varma S, Casanova R, An
661 Y, Andrews RM, O'Brien R, Pletnikova O, Troncoso
662 JC, Toledo J, Baillie R, Arnold M, Kastenmueller G,
663 Nho K, Doraiswamy PM, Saykin AJ, Kaddurah-Daouk
664 R, Legido-Quigley C, Thambisetty M (2018) Brain and
665 blood metabolite signatures of pathology and progression in
666 Alzheimer disease: A targeted metabolomics study. *PLoS*
667 *Med* **15**, e1002482.
- 668 [26] Wang MJ, Yi S, Han JY, Park SY, Jang JW, Chun IK,
669 Kim SE, Lee BS, Kim GJ, Yu JS, Lim K, Kang SM, Park
670 YH, Youn YC, An SSA, Kim S (2017) Oligomeric forms
671 of amyloid- β protein in plasma as a potential blood-based
672 biomarker for Alzheimer's disease. *Alzheimers Res Ther* **9**,
673 98.
- 674 [27] Reumiller CM, Schmidt GJ, Dhrami I, Umlauf E, Rap-
675 pold E, Zellner M (2018) Gender-related increase of
676 tropomyosin-1 abundance in platelets of Alzheimer's dis-
677 ease and mild cognitive impairment patients. *J Proteomics*
678 **178**, 73-81.
- 679 [28] Pedrini S, Gupta VB, Hone E, Doecke J, O'Bryant S, James
680 I, Bush AI, Rowe CC, Villemagne VL, Ames D, Masters
681 CL, Martins RN, AIBL Research Group (2017) A blood-
682 based biomarker panel indicates IL-10 and IL-12/23p40 are
683 jointly associated as predictors of β -amyloid load in an AD
684 cohort. *Sci Rep* **7**, 14057.

- 685 [29] Lunnon K, Keohane A, Pidsley R, Newhouse S, Riddoch-
686 Contreras J, Thubron EB, Devall M, Soininen H,
687 Kloszewska I, Mecocci P, Tsolaki M, Vellas B, Schalkwyk
688 L, Dobson R, Malik AN, Powell J, Lovestone S, Hodges
689 A, AddNeuroMed Consortium (2017) Mitochondrial genes
690 are altered in blood early in Alzheimer's disease. *Neurobiol*
691 *Aging* **53**, 36-47.
- 692 [30] Kobayashi N, Shinagawa S, Nagata T, Shimada K, Shibata
693 N, Ohnuma T, Kasanuki K, Arai H, Yamada H, Nakayama
694 K, Kondo K (2016) Usefulness of DNA methylation levels
695 in COASY and SPINT1 gene promoter regions as biomark-
696 ers in diagnosis of Alzheimer's disease and amnesic mild
697 cognitive impairment *PLoS One* **11**, e0168816.
- 698 [31] Yu L, Chibnik LB, Yang J, McCabe C, Xu J, Schneider JA,
699 De Jager PL, Bennett DA (2016) Methylation profiles in
700 peripheral blood CD4+ lymphocytes versus brain: The rela-
701 tion to Alzheimer's disease pathology. *Alzheimers Dement*
702 **12**, 942-951.
- 703 [32] Gupta VB, Hone E, Pedrini S, Doecke J, O'Bryan S, James
704 I, Bush AI, Rowe CC, Villemagne VL, Ames D, Masters
705 CL, Martins RN, AIBL Research Group (2017) Altered
706 levels of blood proteins in Alzheimer's disease longitu-
707 dinal study: Results from Australian Imaging Biomarkers
708 Lifestyle Study of Ageing cohort. *Alzheimers Dement*
709 (*Amst*) **8**, 60-72.
- 710 [33] Knapp MJ, Knopman DS, Solomon PR, Pendlebury WW,
711 Davis CS, Gracon SI (1994) A 30-week randomized con-
712 trolled trial of high-dose tacrine in patients with Alzheimer's
713 disease. The Tacrine Study Group. *JAMA* **271**, 985-991.
- 714 [34] Jacobs DM, Ard MC, Salmon DP, Galasko DR, Bondi MW,
715 Edland SD (2017) Potential implications of practice effects
716 in Alzheimer's disease prevention trials. *Alzheimers Dement*
717 (*NY*) **3**, 531-535.
- 718 [35] Lewczuk P, Leental N, Spitzer P, Maler JM, Kornhuber J
719 (2015) Amyloid- β 42/40 cerebrospinal fluid concentration
720 ratio in the diagnostics of Alzheimer's disease: Validation
721 of two novel assays. *J Alzheimers Dis* **43**, 183-191.
- 722 [36] Brys M, Pirraglia E, Rich K, Rolstad S, Mosconi L, Swital-
723 ski R, Glodzik-Sobanska L, De Santi S, Zinkowski R, Mehta
724 P, Pratico D, Saint Louis LA, Wallin A, Blennow K, de
725 Leon MJ (2009) Prediction and longitudinal study of CSF
726 biomarkers in mild cognitive impairment. *Neurobiol Aging*
727 **30**, 682-690.
- 728 [37] Nabers A, Perna L, Lange J, Mons U, Schartner J,
729 Gldenhaupt J, Saum KU, Janelidze S, Holleczek B,
730 Rujescu D, Hansson O, Gerwert K, Brenner H (2018) Amy-
731 loid blood biomarker detects Alzheimer's disease. *EMBO*
732 *Mol Med*. doi: 10.15252/emmm.201708763
- 733 [38] Giedraitis V, Sundelf J, Irizarry MC, Grevik N, Hyman
734 BT, Wahlund LO, Ingelsson M, Lannfelt L (2007) The nor-
735 mal equilibrium between CSF and plasma amyloid beta
736 levels is disrupted in Alzheimer's disease. *Neurosci Lett*
737 **427**, 127-131.
- 738 [39] Figurski MJ, Waligrska T, Toledo J, Vanderstichele
739 H, Korecka M, Lee VM, Trojanowski JQ, Shaw
740 LM, Alzheimer's Disease Neuroimaging Initiative (2012)
741 Improved protocol for measurement of plasma β -amyloid in
742 longitudinal evaluation of Alzheimer's Disease Neuroimaging
743 Initiative study patients. *Alzheimers Dement* **8**, 250-260.
- 744 [40] Teunissen CE, Chiu MJ, Yang CC, Yang SY, Scheltens P,
745 Zetterberg H, Blennow K (2018) Plasma amyloid- β (A β 42)
746 Correlates with cerebrospinal fluid A β 42 in Alzheimer's
747 disease. *J Alzheimers Dis* **62**, 1857-1863.
- 748 [41] Thambisetty M, Simmons A, Velayudhan L, Hye A, Camp-
749 bell J, Zhang Y, Wahlund LO, Westman E, Kinsey A,
750 Gntert A, Proitsi P, Powell J, Causevic M, Killick R, Lun-
751 non K, Lynham S, Broadstock M, Choudhry F, Howlett
752 DR, Williams RJ, Sharp SI, Mitchelmore C, Tunnard C,
753 Leung R, Foy C, O'Brien D, Breen G, Furney SJ, Ward M,
754 Kloszewska I, Mecocci P, Soininen H, Tsolaki M, Vellas B,
755 Hodges A, Murphy DG, Parkins S, Richardson JC, Resnick
756 SM, Ferrucci L, Wong DF, Zhou Y, Muehlboeck S, Evans
757 A, Francis PT, Spenger C, Lovestone S (2010) Association
758 of plasma clusterin concentration with severity, pathology,
759 and progression in Alzheimer disease. *Arch Gen Psychiatry*
760 **67**, 739-748.
- 761 [42] Wang P, Chen K, Gu Y, Guo Q, Hong Z, Zhao Q (2017) β -
762 amyloid upregulates intracellular clusterin but not secretory
763 clusterin in primary cultured neurons and APP mice. *Curr*
764 *Alzheimer Res* **14**, 1207-1214.
- 765 [43] Desikan RS, Thompson WK, Holland D, Hess CP, Brewer
766 JB, Zetterberg H, Blennow K, Andreassen OA, McEvoy LK,
767 Hyman BT, Dale AM, Alzheimer's Disease Neuroimaging
768 Initiative Group (2014) The role of clusterin in amyloid- β -
769 associated neurodegeneration. *JAMA Neurol* **71**, 180-187.
- 770 [44] Lambert JC, Heath S, Even G, Campion D, Sleegers K,
771 Hiltunen M, Combarros O, Zelenika D, Bullido MJ, Tave-
772 rner B, Letenneur L, Bettens K, Berr C, Pasquier F, Fivet
773 N, Barberger-Gateau P, Engelborghs S, De Deyn P, Mateo
774 I, Franck A, Helisalmi S, Porcellini E, Hanon O, European
775 Alzheimer's Disease Initiative Investigators, de Pancorbo
776 MM, Lendon C, Dufouil C, Jaillard C, Leveillard T, Alvarez
777 V, Bosco P, Mancuso M, Panza F, Nacmias B, Boss P, Pic-
778 cardini P, Annoni G, Seripa D, Galimberti D, Hannequin D,
779 Licastro F, Soininen H, Ritchie K, Blanch H, Dartigues
780 JF, Tzourio C, Gut I, Van Broeckhoven C, Alperovitch A,
781 Lathrop M, Amouyel P (2009) Genome-wide association
782 study identifies variants at CLU and CR1 associated with
783 Alzheimer's disease. *Nat Genet* **41**, 1094-1099.
- 784 [45] Carrasquillo MM, Belbin O, Hunter TA, Ma L, Bisceglia
785 GD, Zou F, Crook JE, Pankratz VS, Dickson DW, Graff-
786 Radford NR, Petersen RC, Morgan K, Younkin SG (2010)
787 Replication of CLU, CR1, and PICALM associations with
788 Alzheimer disease. *Arch Neurol* **67**, 961-964.
- 789 [46] Mielke MM, Hagen CE, Xu J, Chai X, Vemuri P, Lowe VJ,
790 Airey DC, Knopman DS, Roberts RO, Machulda MM, Jack
791 CR Jr, Petersen RC, Dage JL (2018) Plasma phospho-tau 181
792 increases with Alzheimer's disease clinical severity and is
793 associated with tau- and amyloid-positron emission tomog-
794 raphy. *Alzheimers Dement*. doi: 10.1016/j.jalz.2018.02.013