



OPEN ACCESS

**Edited by:**

Vitaly Dzhavakhiya,  
Lomonosov Moscow State University,  
Russia

**Reviewed by:**

Mahmut Tör,  
University of Worcester, UK  
Javier Plasencia,  
Universidad Nacional Autónoma de  
México, Mexico  
Divya Chandran,  
Regional Centre for Biotechnology,  
India

**\*Correspondence:**

Michele Perazzoli,  
Department of Sustainable  
Agro-Ecosystems and Bioresources,  
Research and Innovation Centre,  
Fondazione Edmund Mach, Via E.  
Mach, 1, San Michele all'Adige  
38010, Italy  
michele.perazzoli@fmach.it

† These authors have contributed  
equally to this work.

**Specialty section:**

This article was submitted to  
Plant Biotic Interactions,  
a section of the journal  
Frontiers in Plant Science

**Received:** 26 June 2015

**Accepted:** 27 August 2015

**Published:** 18 September 2015

**Citation:**

Nesler A, Perazzoli M, Puopolo G,  
Giovannini O, Elad Y and Pertot I  
(2015) A complex protein derivative  
acts as biogenic elicitor of grapevine  
resistance against powdery mildew  
under field conditions.  
Front. Plant Sci. 6:715.  
doi: 10.3389/fpls.2015.00715

# A complex protein derivative acts as biogenic elicitor of grapevine resistance against powdery mildew under field conditions

Andrea Nesler<sup>1†</sup>, Michele Perazzoli<sup>1\*†</sup>, Gerardo Puopolo<sup>1</sup>, Oscar Giovannini<sup>1</sup>, Yigal Elad<sup>2</sup> and Ilaria Pertot<sup>1</sup>

<sup>1</sup> Department of Sustainable Agro-Ecosystems and Bioresources, Research and Innovation Centre, Fondazione Edmund Mach, San Michele all'Adige, Italy, <sup>2</sup> Department of Plant Pathology and Weed Research, Agricultural Research Organization, The Volcani Center, Bet Dagan, Israel

Powdery mildew caused by *Erysiphe necator* is one of the most important grapevine diseases in several viticulture areas, and high fungicide input is required to control it. However, numerous synthetic chemical pesticides are under scrutiny due to concerns about their impact on human health and the environment. Biopesticides, such as biogenic elicitors, are a promising alternative to chemical fungicides. Although several studies have reported on effective elicitors against grapevine diseases, their efficacy under field conditions has not been investigated extensively or has occurred at rather limited levels. Our goal was to examine the efficacy of a protein-based composition, namely nutrient broth (NB), against powdery mildew under field conditions and to characterize its mechanism of action. Weekly treatments with NB was highly effective in controlling powdery mildew on grapevine across seasons with different disease pressures. The level of disease control achieved with NB was comparable to standard fungicide treatments both on leaves and bunches across three different years. NB has no direct toxic effect on the germination of *E. necator* conidia, and it activates plant resistance with both systemic and translaminar effect in experiments with artificial inoculation under controlled conditions. NB induced the expression of defense-related genes in grapevine, demonstrating stimulation of plant defense mechanisms, prior to and in the early stages of pathogen infection. NB is a natural derivative from meat and yeast, substances that tend not to raise concerns about toxicological and ecotoxicological properties. NB represents a valid control tool for integrated plant protection programs against powdery mildew, to reduce the use of synthetic pesticides on grapevine.

**Keywords:** biocontrol, *Vitis vinifera*, induced resistance, defense-related genes, gene expression, powdery mildew, protein hydrolysates

## Introduction

Synthetic chemical pesticides have contributed significantly to the sizable increase in global production of agricultural goods in recent decades (Hillocks, 2012). On the other hand, the overuse of pesticides has raised concerns about their impact on human health and the environment (Fantke et al., 2012). For these reasons, the European Union (EU), along with many countries around the world, has implemented stringent regulations on the registration of plant protection products, and directed policies toward achieving significant reductions in pesticide use (Hillocks, 2012; Skevas et al., 2013). In addition, several active ingredients are under scrutiny in the EU because of their potential hazards, and a list of candidates for substitution has been drafted ([http://ec.europa.eu/food/plant/pesticides/approval\\_active\\_substances/](http://ec.europa.eu/food/plant/pesticides/approval_active_substances/)). The list contains several molecules (e.g., triazoles), which are currently being used against powdery mildews. However, some natural chemicals used against powdery mildews, such as sulfur, are not without negative effects (e.g., an undesirable reduction of predatory mites, a risk of skin and eye irritation for humans, the potential to cause unpleasant aromas in wine).

Pesticide application on grapevine (*Vitis vinifera*) accounts for a large portion of pesticide use. While viticulture constituted only 3.3% of the total agricultural area of the EU, it accounted for 67% of all fungicides applied to crops in the period from 2001 to 2003 (Qiu et al., 2015). Powdery mildew caused by the fungus *Erysiphe necator* Schwein [synonym *Uncinula necator* (Schw.) Burr.] is one of the most important grapevine diseases worldwide. The pathogen colonizes the epidermal layer of leaves and berries, causing severe yield loss and depreciation of wine quality (Stummer et al., 2003; Calon nec et al., 2004). Most cultivated grapevine varieties are susceptible to powdery mildew and growers need to apply fungicides frequently (every 7–10 days in seasons with high disease pressure), with a dramatic increase in production costs and impacts on human health and the environment (Jones et al., 2014). In California, for example, 20% of total costs associated with wine grape production is directly related to powdery mildew control (Fuller et al., 2014). No commercially relevant resistant cultivars are currently available, and biological alternatives have shown only limited efficacy under field conditions (Crisp et al., 2006a,b; Gadoury et al., 2012). Optimizing dosages and the timing of pesticide treatments as part of integrated pest management programs is a move toward reducing massive and widespread use of fungicides. However, there is also an urgent need to find feasible alternatives to chemical fungicides for controlling grapevine powdery mildew.

To find sustainable approaches to manage the disease, studies have increasingly targeted exogenous molecules and living microorganisms that induce grapevine defense responses (elicitors; Delaunoy et al., 2014). The use of elicitors is based on the concept that plants use sophisticated mechanisms to defend against pathogen attacks (Panstruga et al., 2009). Plants can recognize specific pathogen- or microbe-associated molecular patterns (PAMPs or MAMPs) and activate specific pathways through PAMP- or MAMP-triggered immunity (Jones and Dangl, 2006). In addition, damage to plant cells from

pathogens can release endogenous damage-associated molecular patterns (DAMPs) that act as warning signals (Wu et al., 2014). DAMPs trigger or amplify plant defense responses and initiate processes that restore plant homeostasis and prepare adjacent tissues for invader perception (Heil and Land, 2014). When specific transmembrane receptors recognize a threat, plant cells react quickly, generating reactive oxygen species, activating protein kinases, and expressing plant defense genes that produce pathogenesis related (PR) proteins and phytoalexins (Macho and Zipfel, 2014; Wu et al., 2014). In addition to reactions directly aimed at impeding local growth of the pathogen, systemic resistance can also be induced in the plant (Pieterse et al., 2009) by complex cross-talk among salicylic acid (SA), jasmonic acid (JA), ethylene (ET), and other plant hormones (Robert-Seilanianz et al., 2011).

Elicitors can be derived from biological origins or synthetic analogs of plant signaling molecules (Wiesel et al., 2014), and several of them have been tested on grapevine. Bacterial elicitors, such as flagellin and harpin, stimulated grapevine defense responses (Chang and Nick, 2012; Trdá et al., 2014). Likewise, rhamnolipids and ergosterol triggered defense responses against *Botrytis cinerea* (Laquitaine et al., 2006; Varnier et al., 2009) and chitin derivatives induced resistance against *B. cinerea* and *Plasmopara viticola* (Repka, 2001; Aziz et al., 2006; Trotel-Aziz et al., 2006). Native or sulfated oligoglucuronans (Caillot et al., 2012) and elicitor from *Pythium oligandrum* (Mohamed et al., 2007) induced resistance against *B. cinerea*. *Trichoderma harzianum* T39 induced resistance against downy mildew (Perazzolli et al., 2008, 2011, 2012), as well as the  $\beta$ -1-3-glucan laminarin (Aziz et al., 2003; Trouvelot et al., 2008; Gauthier et al., 2014) and oligogalacturonides (Aziz et al., 2004). Few reports have characterized the efficacy of elicitors for controlling of *E. necator*. Particularly, an optimized chitosan formulation (Iriti et al., 2011) and a complex of chitosan fragments (COS-OGA) reduced powdery mildew severity in grapevine (van Aubel et al., 2014). Likewise, an extract from the green macroalga *Ulva armoricana* controlled powdery mildew (Jaulneau et al., 2011) by inducing plant defense through the JA pathway (Jaulneau et al., 2010). Moreover, knotweed extracts (Milsana) were reported as resistance inducers with moderate efficacy against powdery mildew (Delaunoy et al., 2014). Applications of milk, whey and potassium bicarbonate reduced powdery mildew severity (Crisp et al., 2006b), but their efficacy under field conditions was affected by the extent of spray coverage (Crisp et al., 2006a), indicating scarce systemic efficacy.

Plant hormones and synthetic analogs of signaling molecules can also stimulate plant defense and their efficacy against *E. necator* has been explored. Induction of defense responses against grapevine powdery mildew was demonstrated by treatments with ET and SA analogs (Belhadj et al., 2008; Dufour et al., 2013). In particular, the ET-releasing ethephon protected detached grapevine leaves and foliar grapevine cuttings against *E. necator* by inducing defense-related genes (Belhadj et al., 2008). The SA analog benzothiadiazole (BTH) activated grapevine resistance against powdery mildew by inducing *PR-1*, *PR-3*, *PR-10*, stilbene synthase (*STS*) and leucoanthocyanidin dioxygenase (*LDOX*) genes both before and after *E. necator* inoculation

(Dufour et al., 2013). Moreover, a commercial product based on phosphorous acid with oligoelements (Trafos Mg-Ca-Si) was reported as resistance inducer with moderate efficacy against grapevine powdery mildew (Delaunoy et al., 2014). Elicitors can be distinguished according to their chemical nature, and proteins, peptides, protein lysates and protein derivatives represent a wide category of plant resistance inducers (Albert, 2013). Protein hydrolysates from soybean and casein reduced downy mildew symptoms on grapevine by inducing defense-related genes and phytoalexin production (Lachhab et al., 2014). Likewise, a composition based on protein extracts and hydrolysates was patented for the control of powdery mildews on a number of crops, including grapevine (Pertot and Elad, 2009).

To date, a number of studies have addressed the development of elicitors on grapevine, but despite initial enthusiasm justified by reproducible efficacy under lab or greenhouse conditions, they have almost always failed to sufficiently control grapevine disease when applied under field conditions (Delaunoy et al., 2014). The purpose of the current study was to demonstrate the efficacy of a complex protein-based composition of meat and yeast extracts against *E. necator* under field conditions. A further aim was to dissect its mechanism of action to further develop a robust elicitor for use in integrated pest management programs of grapevine.

## Materials and Methods

### Evaluation of the Efficacy of Nutrient Broth against Grapevine Powdery Mildew under Field Conditions

Field trials were carried out in 2010, 2011 and 2013 at S. Michele all'Adige (latitude: N46.184391, longitude: E11.124499, altitude: 228 m) in a vineyard (grapevine cultivar Mittervernatsch grafted on Teleki 5C) planted in 1997 and trained into a pergola trentina trellis system (distance of plants: 3.0 m between rows  $\times$  0.8 m on the row). No pesticides were used in the experimental vineyard, except for copper hydroxide (Kocide 3000 at 2.5 kg/ha; DuPont de Nemours) sprayed at 7–10 day intervals depending on the weather conditions from the beginning of May to end of July to prevent downy mildew infections.

The nutrient broth (NB) was composed of 0.4 g/l meat extract (Fluka Analytical, Sigma-Aldrich, St. Louis, MO, USA), 0.7 g/l yeast extract (Fluka Analytical) and 1.9 g/l peptone from meat (Fluka Analytical). This composition was selected as the most effective against powdery mildew from a list of laboratory protein extracts commonly used as nutritional factors in microbiological media (peptone, beef extract, yeast extract, tryptone and malt extract; Fluka Analytical). In high throughput preliminary experiments on zucchini (*Cucurbita pepo* cv. Afrodite) plants, the protein extracts were tested against powdery mildew (*Podosphaera xanthii*) at 5.0 g/l; in addition NB was also tested at 0.5 and 2.0 g/l. Briefly, zucchini plants were grown in individual 2.5 l-pots containing a mixture of peat and pumice (3:1). Plants with two fully developed leaves were treated with a hand sprayer, allowed to dry, and inoculated with a water suspension of *P. xanthii* conidia ( $1 \times 10^5$  conidia/ml). Four

replicates (plants) were analyzed for each treatment and powdery mildew severity was scored at 14 days post-inoculation (dpi) on all leaves by assessing the percentage of infected leaf area covered by white powdery mildew sporulation according to the standard guidelines of the European and Mediterranean Plant Protection Organization (EPPO, 1990). The efficacy of each treatment was calculated according to the following formula:

$$\text{Efficacy} = \frac{(\text{SC} - \text{ST})}{\text{SC}} \times 100$$

Where SC corresponds to disease severity in control plants and ST corresponds to disease severity in plants treated with a tested molecule.

For field trials in the vineyard, the dosage of NB used in the first year (2010) was 5.0 g/l, corresponding to 5.0 Kg/ha. Since slight phytotoxic effects were observed on some leaves at the end of the season (Figure S1), the NB dosage was decreased to 3.0 g/l in the second (2011) and third (2013) years. As untreated control and standard fungicide treatment, plants were sprayed with water (control) or with 5 g/l of wettable sulfur according to the manufacturer's dosage instruction for intermediate infection pressure of *E. necator* (Zolvis 80, Manica, Italy), respectively. Treatments were applied weekly with a motorized backpack mist blower (450, Solo, USA). A randomized complete block design with three replicates of eight plants each per treatment was used. Plants were assessed visually each week using 40 and 20 randomly chosen leaves and bunches per replicate, respectively. Disease severity was assessed as a percentage of infected leaf/bunch area covered by white powdery mildew sporulation, and the disease incidence was calculated as percentage of infected leaves or bunches showing white powdery mildew sporulation, according to the EPPO standard guidelines (EPPO, 1988). To evaluate the cumulative impact on the photosynthetic surface throughout the entire season, the development of the disease in terms of severity and incidence was assessed as the area under the disease progress curve (AUDPC) using this formula:

$$\text{AUDPC} = \sum \frac{(X_i + X_{i+1})}{2} (t_{i+1} - t_i)$$

Where  $X_i$  corresponds to either disease severity or incidence (%) at assessment  $i$ ,  $X_{i+1}$  corresponds to either the severity or incidence (%) at subsequent assessment  $i + 1$ , and  $(t_{i+1} - t_i)$  corresponds to the number of days between the two consecutive assessments. Temperature and rain during the season were recorded at a nearby meteorological station (<http://meteo.iasma.it/meteo/>).

### Assessment of the Direct Toxic Effect on the Germination of *Erysiphe necator* Conidia

To evaluate the direct effect of NB on the germination of *E. necator* conidia, leaf disks (19 mm diameter) were cut from the third and fourth leaves (starting from the apical meristem) of healthy grapevine plants (cv. Pinot noir grafted on Kober 5BB) grown under greenhouse conditions. Leaves were surface sterilized by incubation in 1% hypochlorite for 10 min and rinsed three times by incubation in sterile water for 5 min under

orbital shaking at 80 rpm (Bills et al., 2007). Leaf disks were placed (adaxial surface uppermost) onto wet sterilized filter paper (three foils) in Petri dishes. Leaf disks were then homogeneously sprayed with water, as untreated control, with 3.0 g/l NB or 5.0 g/l of sulfur as a standard fungicide, using a small hand sprayer. Leaf disks were dried under a laminar hood for 1 h, and conidia were brushed gently on them with a paint brush from young leaves carrying freshly sporulation of *E. necator* at 14 dpi. The *E. necator* inoculum was obtained from infected leaves of untreated vineyards in northern Italy (Trentino region) and was maintained by subsequent inoculations on grapevine plants (cv. Pinot noir grafted on Kober 5BB) under greenhouse conditions at  $25 \pm 1^\circ\text{C}$  with  $80 \pm 10\%$  relative humidity (RH). Inoculated leaf discs were incubated for 44 h at  $23 \pm 1^\circ\text{C}$  in Petri dishes (RH close to 99%) to allow conidia germination. In order to assess germination, conidia were removed from the leaf disc surface using a piece of transparent adhesive tape ( $2 \times 3$  cm) and stained with a drop of the cotton blue staining solution according to Peries (1962). The percentage of germinated conidia was assessed by counting under a light microscope and conidia were scored as germinated when their germ tube length was greater than their lateral radius (Pertot et al., 2007). Four replicates of three disks were assessed for each treatment by counting 50 conidia for each leaf disk, and the experiment was carried out twice.

### Assessment of Induced Resistance and Gene Expression Analysis

Since grapevine leaves rapidly develop ontogenic resistance to powdery mildew under greenhouse conditions, the level of systemic and local resistance activated by NB was tested on zucchini plants with the same methodology used for the preliminary assessment of the efficacy of the protein extracts. In this experiment, zucchini plants with at least eight developed leaves were treated with NB or water (control) on the first four basal leaves to test the local (treated basal leaves) and systemic (untreated apical leaves) effect. Plants were also treated on the abaxial surface of each leaf to analyze the translaminal effect on the adaxial surface. Powdery mildew inoculation of zucchini plants was carried out as described above and disease severity was assessed 14 dpi on the adaxial surface of each leaf, and scores of basal (local effect) and apical (systemic effect) leaves were analyzed separately.

Two-year-old grapevine plants (cv. Pinot noir grafted onto Kober 5BB) were used to assess the level of disease reduction and the expression of defense-related genes. Plants were grown in individual 2.5 l-pots containing a mixture of peat and pumice (3:1) under greenhouse conditions at  $25 \pm 1^\circ\text{C}$  with a photoperiod of 16 h light and RH of  $60 \pm 10\%$  for 2 months. Plants were sprayed with water, as untreated control, 3.0 g/l of NB, or 5.0 g/l of sulfur, as standard fungicide. Treatments were repeated daily for three consecutive days at 1, 2, and 3 days before *E. necator* inoculation to maximize the phenotypic response of grapevine induced resistance (Perazzolli et al., 2008). Treatments were applied with a compressed-air hand sprayer to the abaxial and adaxial surfaces of all leaves, and 20–30 ml was applied to each plant, depending on the number of leaves, in order to

achieve homogenous distribution. Nine replicates (plants) per treatment were analyzed in a randomized complete block design, and the experiment was carried out twice. One day after the last treatment, all leaves of each plant were inoculated with dry conidia of *E. necator* maintained by subsequent inoculations on grapevine under greenhouse conditions as described above. Conidia were brushed gently with a paint brush from infected young leaves (14 dpi) carrying freshly sporulation of *E. necator* onto the target leaves (Blaich et al., 1989). Inoculated plants were incubated overnight in the dark at  $25 \pm 1^\circ\text{C}$  with  $95 \pm 4\%$  RH and then kept under greenhouse conditions at  $25 \pm 1^\circ\text{C}$  with  $80 \pm 10\%$  RH for 13 days. Disease severity was assessed visually on each leaf according to the EPPO standard guidelines (EPPO, 1988).

For gene expression analysis, leaf samples were collected immediately before (0), at one (1), six (6) and 13 dpi with powdery mildew. For each treatment, leaf samples were collected from three different plants (replicates) at each time point. Each sample comprised three half-leaves from the same plant, and only leaves of the fourth, fifth, and sixth node starting from the apical meristem were collected, pooled, immediately frozen in liquid nitrogen and stored at  $-80^\circ\text{C}$ . Total RNA extraction, cDNA synthesis and quantitative real-time PCR (RT-qPCR) reactions were carried out as described Banani et al. (2014) using specific primers (Table S1). Briefly, each sample was examined in three technical replicates, and dissociation curves were analyzed to verify the specificity of each reaction. Cycle threshold (Ct) values were extracted with the Light Cycler 480 SV1.5.0 software (Roche) using the second derivative calculation and LinReg 11.1 software was used to calculate reaction efficiency (Ruijter et al., 2009). The relative expression of each gene was obtained according to the Pfaffl equation (Pfaffl, 2001), using leaves of control plants at 0 dpi as the calibrator. The  $\gamma$ -chain elongation factor 1 gene (EF1- $\gamma$ ) was used as reference gene with constitutive expression for data normalization (Dufour et al., 2013). For each sample, mean gene expression and standard error values were calculated based on three replicates, and two independent repetitions of the experiment were analyzed.

### Statistical Analysis

Data were analyzed using Statistica 9 software (StatSoft, Tulsa, OK, USA). Disease severity and incidence scores on grapevines were normalized by transformation (with arcsin for the field experiments and  $\log_{10}$  for the greenhouse experiments). Fold change values of gene expression analysis were normalized by the equation  $Y = \log_{10}(1 + x)$  (Casagrande et al., 2011). AUDPC data and efficacy scores were normalized by square root and arcsin transformation, respectively. After validation of normal distribution (K-S test,  $\alpha < 0.05$ ) and variance homogeneity (Levene's test,  $\alpha < 0.05$ ) of the data, analysis of variance (ANOVA) was carried out and the Tukey's HSD test ( $\alpha = 0.05$ ) was applied to detect significant differences among treatments. An F-test was used to demonstrate non-significant treatment-experiment interactions ( $\alpha > 0.05$ ). A *t*-test ( $\alpha = 0.05$ ) was used to analyze severity scores of NB-treated and control plants in the experiments of translaminal and systemic effect.

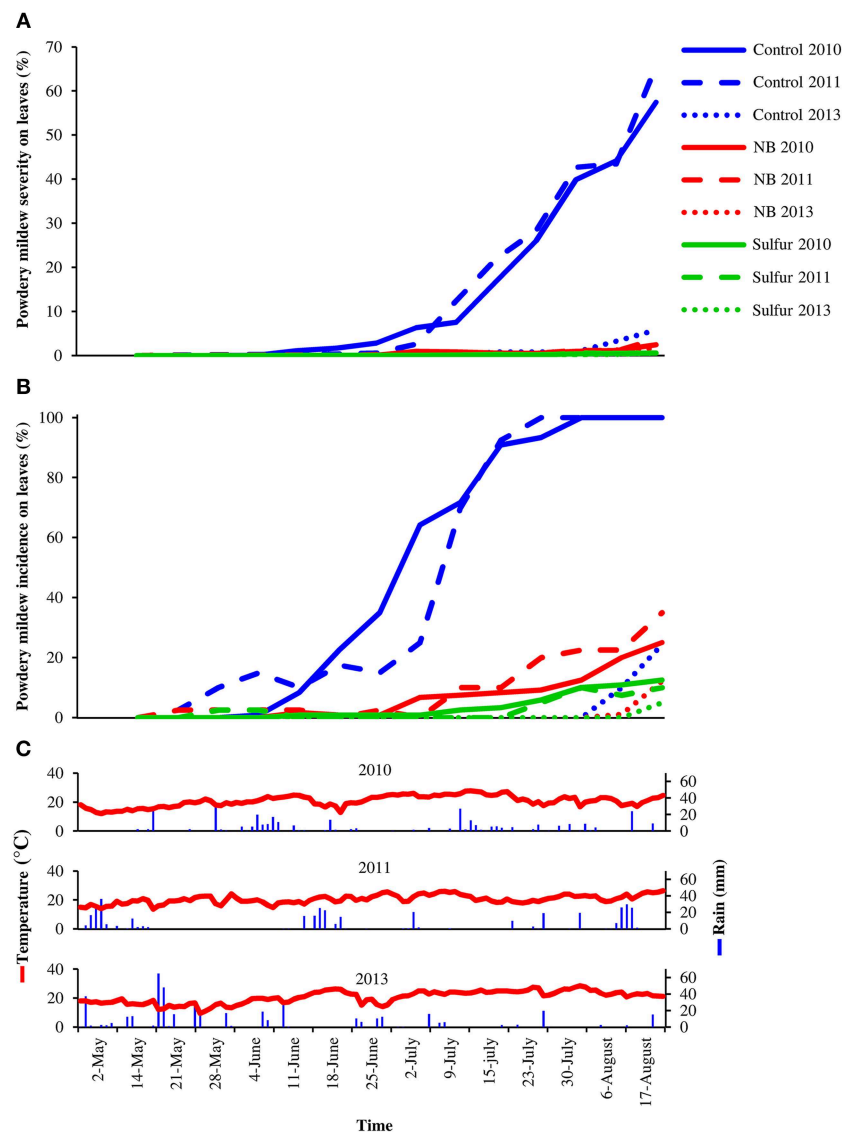


## Results

### Evaluation of the Efficacy of Nutrient Broth against Grapevine Powdery Mildew under Field Conditions

Laboratory protein extracts were tested against powdery mildew on zucchini plants. Although the efficacy was statistically comparable to 2.0 g/l NB and 5.0 g/l beef extract, 5.0 g/l NB provided the greatest reduction of powdery mildew symptoms (Figure S2) and this formulation was used in the field trials. In 2010 and 2011, primary infections occurred very early in

the season and the first signs of the disease were observed on June 6 and May 19, respectively. The disease intensified very quickly in these two seasons, resulting in high levels of severity and incidence on leaves of control plants (Figure 1). In 2013, due to unsuitable conditions for the disease (high mean daily temperatures and low precipitation starting in June), powdery mildew developed slowly and very late in the season and symptoms were observed mainly on bunches rather than leaves starting on July 7 on control plants. The onset of the disease occurred almost at the same time on leaves of control, NB- and sulfur-treated plants in the 3 years tested. However, disease



**FIGURE 1 | Effect of nutrient broth against powdery mildew on grapevine leaves under field conditions.** Powdery mildew severity (A) and incidence (B) was assessed on leaves of grapevine plants treated with water (Control), nutrient broth (NB) or sulfur (Sulfur), as standard fungicide, under field conditions in three different seasons (2010, 2011, and 2013). Treatments were applied weekly from the beginning of May to the middle of August. Disease severity and incidence were assessed weekly as percentage of adaxial leaf area covered by white sporulation and percentage of leaves showing symptoms by scoring 40 leaves per replicate, respectively. The mean severity and incidence scores of three replicates (eight plants each) are presented for each treatment. The temperature and rain during the seasons were recorded by a meteorological station (C). The dosage of NB was 5.0 g/l in 2010, and was reduced to 3.0 g/l in 2011 and 2013 to avoid phytotoxicity.

**TABLE 1 | Area under the disease progress curve (AUDPC) of grapevine powdery mildew under field conditions.**

Year	Treatment	AUDPC on severity	AUDPC on incidence
2010	Control	1667.6 ± 312.6b	5544.2 ± 233.6b
	NB	16.2 ± 0.9a	398.3 ± 58.1a
	Sulfur	54.9 ± 15.7a	726.6 ± 235.3a
2011	Control	1506.9 ± 101.5b	4842.5 ± 98.8b
	NB	11.5 ± 6.3a	266.5 ± 136.1a
	Sulfur	46.0 ± 13.0a	926.5 ± 301.3a
2013	Control	101.1 ± 40.1b	756.8 ± 23.3b
	NB	7.3 ± 2.5a	120.0 ± 13.8a
	Sulfur	3.5 ± 3.5a	29.9 ± 7.7a

Area under the disease progress curve (AUDPC) was calculated for powdery mildew severity and incidence on leaves of grapevines treated with water (Control), nutrient broth (NB) or sulfur (Sulfur), as standard fungicide, under field conditions in three different seasons (2010, 2011, and 2013). Treatments were applied weekly from the beginning of May to the middle of August. Disease severity and incidence were assessed weekly as percentage of adaxial leaf area covered by white sporulation and percentage of leaves showing symptoms by scoring 40 leaves per replicate, respectively. The mean AUDPC and standard error values of three replicates (eight plants each) are presented for each treatment. For each year, different letters indicate significant differences of disease incidence and severity among treatments according to Tukey's HSD test ( $\alpha = 0.05$ ).

progress during the season was slower in NB- and sulfur-treated plants compared to control plants, resulting in significantly lower levels of powdery mildew severity and incidence during the season. AUDPC calculated for severity and incidence on leaves of NB-treated plants was comparable to sulfur-treated plants and significantly lower than that of control plants across the 3 years (Table 1). Likewise, powdery mildew severity on grape bunches was significantly lower on NB-treated plants compared to control plants at the end of each of the 3 years tested, and was comparable to that of sulfur-treated plants (Figure 2). Disease incidence was significantly reduced by NB treatments on bunches in 2010 and 2011, but not in 2013. Except for the slight phytotoxic effects of 5 g/l NB at the end of the 2010 season, no negative effect of 3 g/l NB on leaf morphology, shoot growth and fruit yield were visible at the end of the 2011 and 2013 seasons (Figure S1).

### Characterization of the Mechanism of Action of Nutrient Broth: Direct Effect on the Germination of Conidia of *Erysiphe necator*

No direct effect of NB on *E. necator* conidia germination was demonstrated, and the percentage of germinated conidia on control ( $50 \pm 2\%$ ) and NB-treated ( $44 \pm 1\%$ ) leaf disks was comparable in both the experiments ( $F$ -test,  $p = 0.46$ ). On the other hand, the treatment with sulfur reduced the percentage of conidia germination by  $70 \pm 2\%$  compared to control leaf disks (Figure S3).

### Characterization of the Mechanism of Action of Nutrient Broth: Assessment of Induced Resistance and Gene Expression Analysis

Foliar applications of NB on leaves of zucchini plants significantly reduced powdery mildew symptoms (Figure 3). NB applied to the first four basal leaves reduced disease symptoms on

untreated apical leaves, demonstrating the activation of systemic resistance. Likewise, NB treatment of the abaxial leaf surface significantly reduced powdery mildew symptoms on the adaxial surface, demonstrating a translaminal effect.

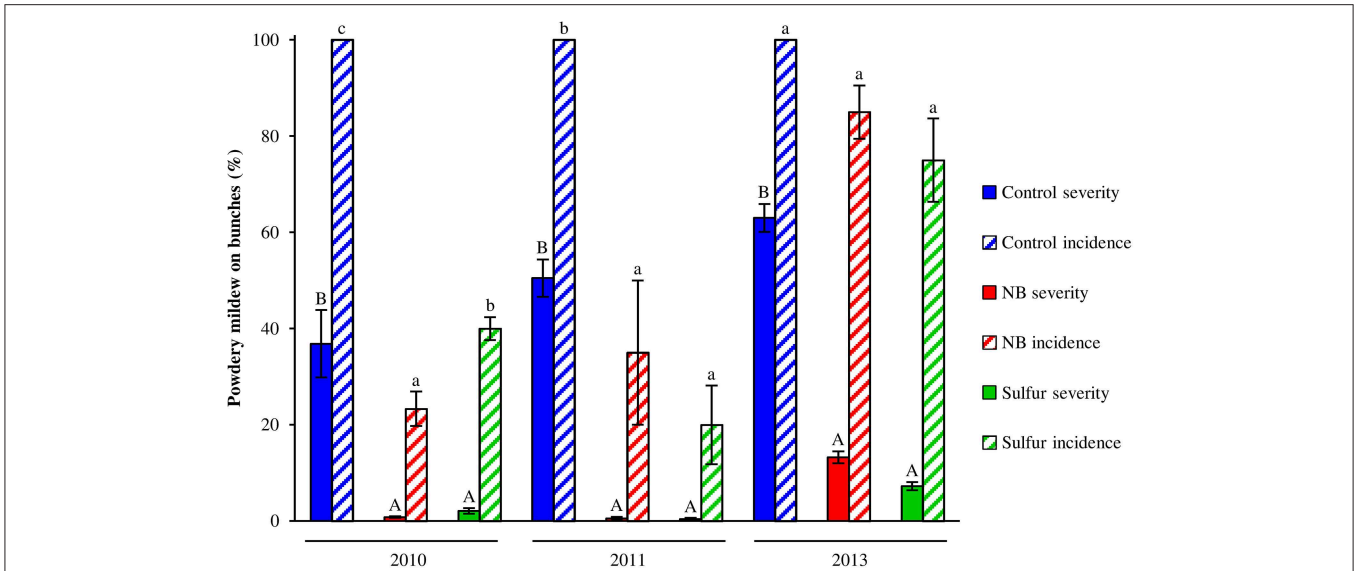
Foliar applications of NB significantly reduced powdery mildew symptoms of the susceptible cultivar Pinot noir under greenhouse conditions (Figure 4). The two experiments were analyzed separately because a slight effect of the "experiment" factor was present ( $F$ -test,  $p = 0.03$ ). NB treatment significantly reduced the level of disease severity, with an efficacy greater than 60% in both experiments, and the efficacy of sulfur was greater than 84%. In order to investigate the molecular mechanisms of the grapevine induced resistance, the relative expression levels of five defense-related genes (Table S1) were analyzed by RT-qPCR. The expression of the PR protein 1 (*PR-1*) gene was induced at 6 (more than 9-fold) and 13 (more than 85-fold) dpi of powdery mildew inoculation in control plants (Figure 5A). *PR-1* was induced more than 10-fold in NB-treated plants at 0 and 1 dpi in both the experiments. The expression level of *PR-1* further increased at 6 dpi (70-fold) and 13 dpi (44-fold) in NB-treated plants in experiment 1. In experiment 2, the expression level of *PR-1* at 6 dpi (12-fold) and 1 dpi were comparable, and reached 32-fold at 13 dpi. In both the experiments, the expression level of *PR-1* was greater in NB-treated than in control plants at 0 and 1 dpi, but not at 6 and 13 dpi. The expression level of *PR-1* was not affected by powdery mildew inoculation in sulfur-treated plants at any of the time points tested, and it was slightly induced at 13 dpi in Experiment 1.

The expression of the *PR-3* gene was up-regulated (6-fold) in control plants at 6 dpi, and it was further induced to 17-fold and 28-fold at 13 dpi in experiments 1 and 2, respectively (Figure 5B). NB treatment increased the expression (more than 6-fold) of *PR-3* at 0 and 1 dpi in both the experiments. In experiment 1, the expression of *PR-3* in NB-treated plants reached the highest expression level at 6 dpi (16-fold) and it decreased, although not significantly, at 13 dpi. In sulfur-treated plants, the *PR-3* gene was not significantly modulated across the duration of the experiment.

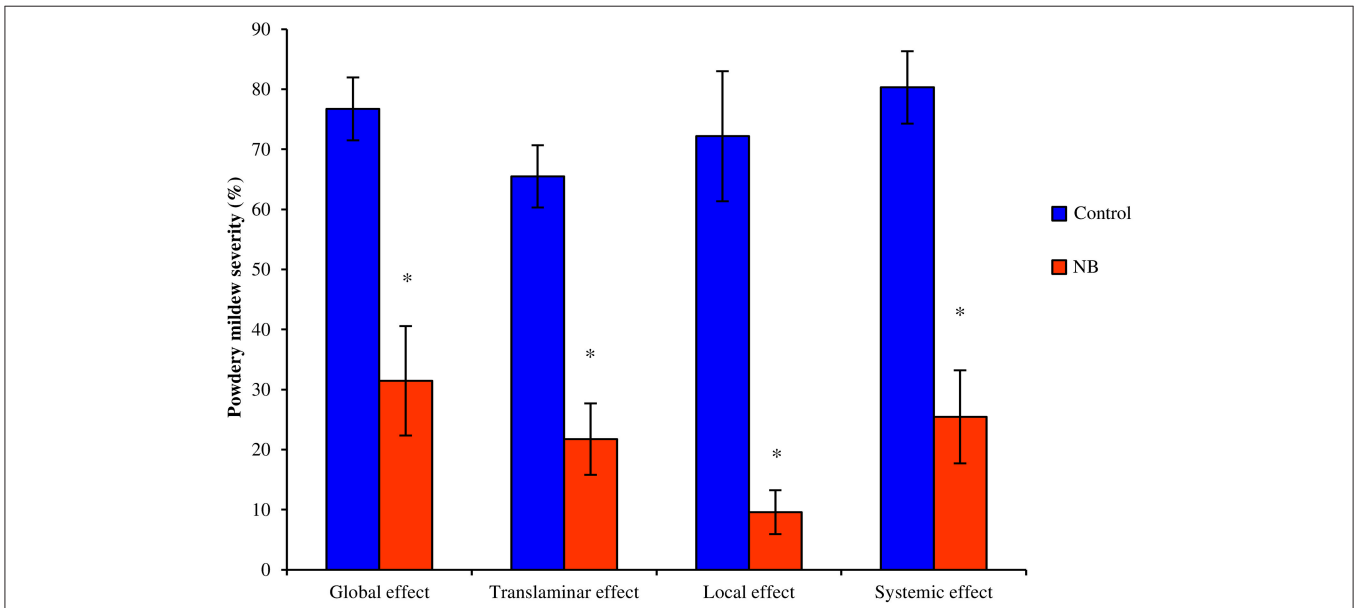
In control plants, the expression level of *PR-6* was maintained at the basal level at 1 and 6 dpi, and it was slightly induced at 13 dpi (Figure 5C). The *PR-6* expression level was greater in NB-treated than control plants at 1 dpi in both the experiments, and at 0 dpi in experiment 1. The highest level of *PR-6* expression (more than 18-fold) was observed at 1 dpi in NB-treated plants.

The expression of the lipoxygenase 9 (*LOX-9*) gene was slightly increased at 6 dpi and it reached the highest expression level at 13 dpi (more than 7-fold) in control plants (Figure 5D). The NB-treated plants showed induction of *LOX-9* at 0 and 1 dpi. At 6 dpi, the expression levels of *LOX-9* in NB-treated and control plants were comparable, and they were statistically greater than sulfur-treated plants. However, *LOX-9* expression level was greater in control than NB-treated plants at 13 dpi.

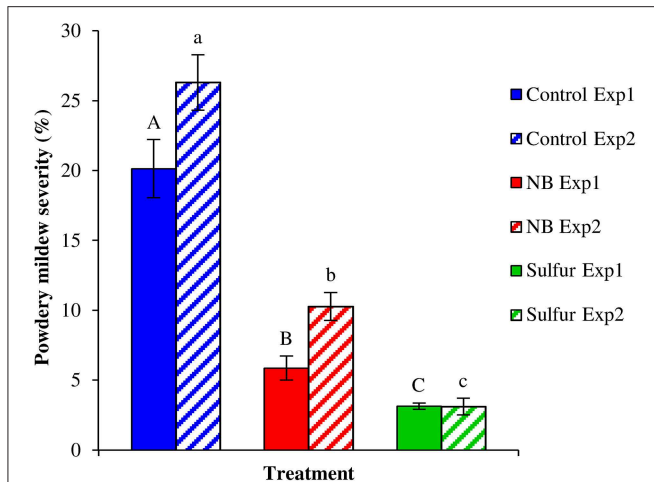
The expression level of the osmotin 1 (*OSM-1*) gene remained at the basal level at 0 and 1 dpi in control plants, and it was induced more than 36- and 13-fold at 6 dpi in experiments 1 and



**FIGURE 2 | Effect of nutrient broth against powdery mildew on grape bunches under field conditions.** Powdery mildew severity and incidence was assessed on bunches of grapevines treated with water (Control), nutrient broth (NB) or sulfur (Sulfur), as standard fungicide, under field conditions in three different seasons (2010, 2011, and 2013). Treatments were applied weekly from the beginning of May to the middle of August. Disease severity and incidence were assessed weekly as percentage of bunch area covered by white sporulation and percentage of bunches showing symptoms by scoring 20 bunches per replicate, respectively. The mean severity and incidence scores and the standard errors of three replicates (eight plants each) are presented for each treatment. For each year, uppercase and lowercase letters indicate significant differences among treatments according to Tukey's HSD test ( $\alpha = 0.05$ ) of disease severity and incidence, respectively.



**FIGURE 3 | Effect of nutrient broth against powdery mildew on zucchini plants under greenhouse conditions.** Powdery mildew severity were evaluated on zucchini plants treated with nutrient broth (NB) or water (Control). Treatments were sprayed to both surfaces of each leaf (Full treatment), to the abaxial surface of each leaf (Abaxial treatment) or to the first four basal leaves (Basal treatment). Disease severity was assessed as the percentage of adaxial leaf area covered by white sporulation 14 days post-inoculation. Global and translaminar effect was calculated on all leaves of full and abaxial treatment, respectively. For basal treatment, scores of treated basal (Local effect) and untreated apical (Systemic effect) leaves were analyzed separately. *F*-test revealed non-significant differences between experiments ( $P > 0.05$ ) and data from two experimental repetitions were pooled. The mean severity and standard error values of eight replicates (potted plants) of two experiments are presented for each treatment. For each treatment, asterisks indicate significant differences between NB-treated and control plants according to *t*-test ( $\alpha = 0.05$ )



**FIGURE 4 | Effect of nutrient broth against powdery mildew on grapevine plants under greenhouse conditions.** Powdery mildew severity was assessed on grapevine leaves treated with water (Control), nutrient broth (NB) or sulfur (Sulfur), as standard fungicide for 3 days before pathogen inoculation. Disease severity was assessed as percentage of adaxial leaf area covered by white sporulation 13 days post-inoculation, and two independent experiments were carried out under greenhouse conditions. The mean severity and standard error values of nine replicates (potted plants) are presented for each treatment and experiment. Uppercase and lowercase letters indicate significant differences among treatments according to Tukey's HSD test ( $\alpha = 0.05$ ) in Experiments 1 (Exp1) and 2 (Exp2), respectively.

2, respectively (Figure 5E). NB increased more than 22-fold the level of *OSM-1* expression at 0 and 1 dpi in comparison to control plants in both experiments. The expression level of *OSM-1* was comparable in NB-treated and control plants at 6 dpi, and it was 3-fold lower in NB-treated than in control plants at 13 dpi. *OSM-1* expression was not significantly affected by powdery mildew inoculation in sulfur-treated plants, except for a slight increase at 13 dpi in Experiment 1.

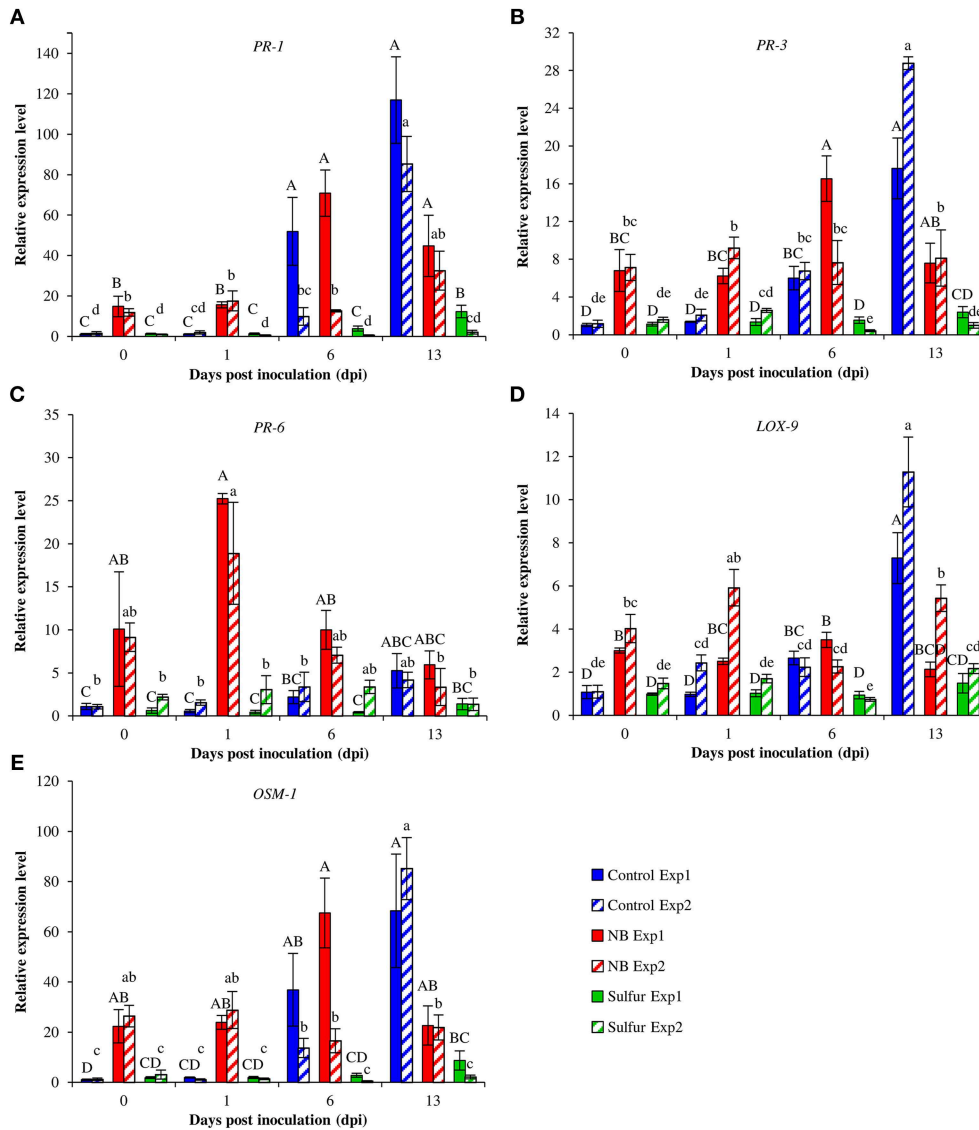
## Discussion

Concerns about the impact of synthetic chemical pesticides on human health and environment have grown enormously in the last two decades, especially for crops that require elevated number of treatments, such as grapevine. Several alternatives to pesticide use on grapevine have been proposed, including microbial biological control agents (Elmer and Reglinski, 2006), resistant *Vitis* spp. hybrids (Akkurt et al., 2007), and genetically modified plants (Delaunoy et al., 2009). However, none of these solutions has become standard practice for powdery mildew control on grapevine. A promising alternative method is the induction of the grapevine defense responses through elicitors (Delaunoy et al., 2014). Several authors have reported the induction of resistance by protein-based elicitors in plants (Albert, 2013; Colla et al., 2014; Lachhab et al., 2014), however the contribution of resistance inducers in plant protection under field conditions has rarely been confirmed or has occurred at rather limited levels (Delaunoy et al., 2014). In grapevine, most of the studies have been focused on downy mildew with the aim

of finding alternatives to copper treatments (Aziz et al., 2003, 2006; Trouvelot et al., 2008; Dagostin et al., 2011; Perazzolli et al., 2011; Delaunoy et al., 2014). Some elicitors and protein derivatives have been tested against grapevine powdery mildew to date (Belhadj et al., 2006, 2008; Crisp et al., 2006a,b; Dufour et al., 2013; van Aubel et al., 2014), but they have not been shown to be capable of directly replacing conventional fungicides in vineyards (Delaunoy et al., 2014). This study presents the first proof of consistent efficacy of a protein-based elicitor against powdery mildew of grapevines under field conditions across three seasons with different disease pressures. The level of disease control was very high both on leaves and bunches, an efficacy which is usually rare for a resistance inducer applied alone under field conditions.

Systemic and translaminal effect of NB on zucchini plants indicated that the mechanism of action against powdery mildew is mainly based on the induction of plant resistance rather than a direct toxic effect on conidia. NB did not directly affect the germination of *E. necator* conidia and induced the expression of defense-related genes in grapevine, as reported for soybean and casein hydrolysates against downy mildew (Lachhab et al., 2014). *E. necator* infection is most probably blocked or limited by the defense reaction of the plant, as reported in the post-infection processes of resistant grapevine species (Fung et al., 2008), and further deep histological analyses could elucidate the key steps of fungal growth inhibition in NB-treated plants. In comparison to control plants, expression of *PR-1*, *PR-3*, *LOX-9*, and *OSM-1* was induced in NB-treated plants before and at 1 dpi with *E. necator*. At 6 dpi, the expression of *PR-1*, *PR-6*, *LOX-9*, and *OSM-1* was comparable in NB-treated and control plants. The expression profiles of *PR* genes suggests that the NB-induced defense is directly activated before inoculation, and it plays a major role in the early stages of powdery mildew infection in limiting colonization of the host. Particularly, *E. necator* conidiospores produced appressoria and secondary hyphae on *V. vinifera* leaves at 1 dpi (Fung et al., 2008) and defense genes were already activated in NB-treated plants at this time point, suggesting an appropriate inhibition of the early phases of fungal penetration. The relevance of a rapid up-regulation of defense-related genes during pathogen infection has also been demonstrated for the response of resistant genotypes against downy mildew (Polesani et al., 2010; Casagrande et al., 2011). Direct up-regulation of defense-related genes before *E. necator* inoculation was also associated with grapevine resistance elicited by ethephon (Belhadj et al., 2008) and BTH (Dufour et al., 2013). In BTH-treated plants, *PR-1*, *PR-3*, and *LOX-9* were induced before inoculation, while *PR-6* was mainly induced at 1 dpi, depending on the *E. necator* strain (Dufour et al., 2013). In control plants, the defense-related genes tested were induced at 6 and 13 dpi, but not at 1 dpi, suggesting that defense response occurred too late to effectively counteract the pathogen. Biotrophic pathogens circumvent plant defense responses during compatible interaction by the release of effectors into the host tissue (Panstruga, 2003; Schulze-Lefert and Panstruga, 2003), and some of them act as suppressors of basal plant defense (Schulze-Lefert and Panstruga, 2003; Chisholm et al., 2006). No induction of defense related genes was detected in the early stages of *E. necator* infection in the susceptible cultivar, indicating





**FIGURE 5 | Effect of nutrient broth on gene expression in grapevine plants under greenhouse conditions.** Relative expression levels of genes encoding the pathogenesis-related protein 1 (*PR-1*; **A**), *PR-3* (**B**), *PR-6* (**C**), lipoxygenase 9 (*LOX-9*; **D**) and osmotin 1 (*OSM-1*; **E**). Grapevine plants were treated with water (Control), nutrient broth (NB) or sulfur (Sulfur), as standard fungicide, for 3 days before pathogen inoculation. Leaf samples were collected just before inoculation (0), at one (1), six (6) and 13 days post-inoculation (dpi). Relative expression levels were calculated using the  $\gamma$ -chain elongation factor 1 gene (*EFT1- $\gamma$* ) as constitutive gene for normalization, and data were calibrated on control plants collected at 0 dpi. For each time point, mean levels of relative expression and standards errors from three replicates (potted plants) are presented for each treatment and experiment. For each gene, uppercase and lowercase letters indicate significant differences among treatments and time points according to Tukey's HSD test ( $\alpha = 0.05$ ) in Experiments 1 (Exp1) and 2 (Exp2), respectively.

the relevance of the defense pre-activation stimulated by NB treatment. Marker genes of SA and JA pathways, such as *PR-1* and *LOX-9* respectively (Hamiduzzaman et al., 2005), were induced by NB treatment, suggesting activation of complex hormone-mediated signaling pathways. Indeed, both SA and JA signals were recently linked to the defense reaction of resistant grapevine genotypes against powdery mildew (Gao et al., 2014; Weng et al., 2014), and the assessment of plant hormone accumulation after NB treatments could be the subject of further studies to better understand mechanisms of the NB-induced response. Activation

of multiple defense pathways suggests broad spectrum activity of NB against different pathogens, particularly those with a biotrophic lifestyle. Two different genera that cause powdery mildew disease were controlled by NB in two different crops, highlighting the strong potential of this natural product against crop diseases.

The protein derivative used in this study is produced for laboratory use using a precisely defined and reproducible process, and its efficacy against powdery mildew is consistent among different batches. NB production processes can be easily

replicated at the industrial level using relatively cheap by-products from food industries, and it may represent an additional tool for integrated pest management programs that aim to reduce the use of synthetic chemical pesticides. The advantage of using a protein derivative to induce resistance on plants is the absence of toxicity for mammals and the environment, and the activation of systemic mechanisms that protect plants even if rain washes the product from leaves. Moreover, the absence of negative effects from weekly applications of 3 g/l NB on plant growth and yield indicates minimal risks for grape production and quality. However, attention should be paid to combining this treatment with copper-based products because copper can be partially absorbed by leaf cells in presence of peptides (Pertot et al., 2006), increasing the risk of phytotoxicity.

In conclusion, our results support the use of NB against powdery mildew in grapevine. We have demonstrated the efficacy of NB under field conditions across three different seasons. However, factors such as vegetative cycle, agro-climatic conditions (Delaunoy et al., 2014), plant genotypes (Banani et al., 2014) and abiotic stresses (Roatti et al., 2013) could affect the induction of plant resistance and reduce the efficacy of resistance inducers under field conditions. Further studies on the relevance of the vegetative cycle and the physiological status of the plant are required to optimize the efficacy of resistance inducers under field conditions (Delaunoy et al., 2014). Protein hydrolysates contain a large variety of active peptides, which could also act as antioxidants and biostimulants (Colla et al., 2014). Particularly, NB contains peptides which could elicit grapevine resistance, as reported for the soybean and casein hydrolysates (Lachhab et al., 2014). NB also contains protein fragments and active enzymes that could be directly recognized as MAMPs (Jones and Dangl, 2006) or be responsible for the release of DAMP signals (Heil and Land, 2014; Wu et al., 2014) that activate plant defenses.

## References

- Akkurt, M., Welter, L., Maul, E., Töpfer, R., and Zyprian, E. (2007). Development of SCAR markers linked to powdery mildew (*Uncinula necator*) resistance in grapevine (*Vitis vinifera* L. and *Vitis* sp.). *Mol. Breed.* 19, 103–111. doi: 10.1007/s11032-006-9047-9
- Albert, M. (2013). Peptides as triggers of plant defence. *J. Exp. Bot.* 64, 5269–5279. doi: 10.1093/jxb/ert275
- Aziz, A., Heyraud, A., and Lambert, B. (2004). Oligogalacturonide signal transduction, induction of defense-related responses and protection of grapevine against *Botrytis cinerea*. *Planta* 218, 767–774. doi: 10.1007/s00425-003-1153-x
- Aziz, A., Poinssot, B., Daire, X., Adrian, M., Bézier, A., Lambert, B., et al. (2003). Laminarin elicits defense responses in grapevine and induces protection against *Botrytis cinerea* and *Plasmopara viticola*. *Mol. Plant Microbe Interact.* 16, 1118–1128. doi: 10.1094/MPMI.2003.16.12.1118
- Aziz, A., Trotel-Aziz, P., Dhucic, L., Jeandet, P., Couderchet, M., and Vernet, G. (2006). Chitosan oligomers and copper sulfate induce grapevine defense reactions and resistance to gray mold and downy mildew. *Phytopathology* 96, 1188–1194. doi: 10.1094/PHYTO-96-1188
- Banani, H., Roatti, B., Ezzahi, B., Giovannini, O., Gessler, G., Pertot, I., et al. (2014). Characterization of resistance mechanisms activated by *Trichoderma harzianum* T39 and benzothiadiazole to downy mildew in different grapevine cultivars. *Plant Pathol.* 63, 334–343. doi: 10.1111/ppa.12089
- Belhadj, A., Saigne, C., Telef, N., Cluzet, S., Bouscaut, J., Corio-Costet, M. F., et al. (2006). Methyl jasmonate induces defense responses in grapevine and triggers protection against *Erysiphe necator*. *J. Agric. Food Chem.* 54, 9119–9125. doi: 10.1021/jf0618022
- Belhadj, A., Telef, N., Cluzet, S., Bouscaut, J., Corio-Costet, M. F., and Mérillon, J. M. (2008). Ethephon elicits protection against *Erysiphe necator* in grapevine. *J. Agric. Food Chem.* 56, 5781–5787. doi: 10.1021/jf800578c
- Bills, G. F., Sánchez Márquez, S., and Zabalgoitia, I. (2007). The endophytic mycobiota of the grass *Dactylis glomerata*. *Fungal Divers.* 27, 171–195. Available online at: [http://www.fungaldiversity.org/fdp/sfdp/27\\_11.pdf](http://www.fungaldiversity.org/fdp/sfdp/27_11.pdf)
- Blaich, R., Heintz, C., and Wind, R. (1989). Studies on conidial germination and initial growth of the grapevine powdery mildew *Uncinula necator* on artificial substrates. *Appl. Microbiol. Biotechnol.* 30, 415–421. doi: 10.1007/BF00296633
- Caillot, S., Rat, S., Tavernier, M. L., Michaud, P., Kovensky, J., Wadouachi, A., et al. (2012). Native and sulfated oligoglucuronans as elicitors of defence-related responses inducing protection against *Botrytis cinerea* of *Vitis vinifera*. *Carbohydr. Polym.* 87, 1728–1736. doi: 10.1016/j.carbpol.2011.09.084
- Calonne, A., Cartolaro, P., Poupot, C., Dubourdieu, D., and Darriet, P. (2004). Effects of *Uncinula necator* on the yield and quality of grapes (*Vitis vinifera*) and wine. *Plant Pathol.* 53, 434–445. doi: 10.1111/j.0032-0862.2004.01016.x
- Casagrande, K., Falginella, L., Castellari, S., Testolin, R., and Di Gasparo, G. (2011). Defence responses in *Rpv3*-dependent resistance to grapevine downy mildew. *Planta* 234, 1097–1109. doi: 10.1007/s00425-011-1461-5

Thus, NB composition should be further investigated to identify with more precision the elicitors of plant resistance and to better understand which protein fragments and peptides are active in plant resistance activation.

## Author Contributions

AN and MP carried out the real time experiments, analyzed data and wrote the manuscript (AN and MP contributed equally to this work), GP carried out the greenhouse experiments, analyzed the data and edited the manuscript, OG carried out the field experiments, analyzed the data and edited the manuscript, YE contributed to the conception of the work, designed the experiments analyzed the data and edited the manuscript, IP contributed to the conception of the work, designed the experiments, carried out the greenhouse experiments, analyzed the data and wrote the manuscript. All authors have read the manuscript and agree with its content.

## Acknowledgments

This research was supported by the EU project INNOVA (Subprogramme: FP7-PEOPLE-2012-IAPP, contract number: 324416). The authors thank Alessandro Ferrari and Loris Maines for technical support with the greenhouse experiments on zucchini plants.

## Supplementary Material

The Supplementary Material for this article can be found online at: <http://journal.frontiersin.org/article/10.3389/fpls.2015.00715>

- Chang, X., and Nick, P. (2012). Defence signalling triggered by Flg22 and Harpin is integrated into a different stilbene output in *Vitis* cells. *PLoS ONE* 7:e40446. doi: 10.1371/journal.pone.0040446
- Chisholm, S. T., Coaker, G., Day, B., and Staskawicz, B. J. (2006). Host-microbe interactions: shaping the evolution of the plant immune response. *Cell* 124, 803–814. doi: 10.1016/j.cell.2006.02.008
- Colla, G., Roupheal, Y., Canaguier, R., Svecova, E., and Cardarelli, M. (2014). Biostimulant action of a plant-derived protein hydrolysate produced through enzymatic hydrolysis. *Front. Plant Sci.* 5:448. doi: 10.3389/fpls.2014.00448
- Crisp, P., Wicks, T. J., Bruer, D., and Scott, E. S. (2006a). An evaluation of biological and abiotic controls for grapevine powdery mildew. 2. Vineyard trials. *Aust. J. Grape Wine Res.* 12, 203–211. doi: 10.1111/j.1755-0238.2006.tb00060.x
- Crisp, P., Wicks, T. J., Lorimer, M., and Scott, E. S. (2006b). An evaluation of biological and abiotic controls for grapevine powdery mildew. 1. Greenhouse studies. *Aust. J. Grape Wine Res.* 12, 192–202. doi: 10.1111/j.1755-0238.2006.tb00059.x
- Dagostin, S., Schärer, H. J., Pertot, I., and Tamm, L. (2011). Are there alternatives to copper for controlling grapevine downy mildew in organic viticulture? *Crop Prot.* 30, 776–788. doi: 10.1016/j.cropro.2011.02.031
- Delaunois, B., Cordelier, S., Conreux, A., Clément, C., and Jeandet, P. (2009). Molecular engineering of resveratrol in plants. *Plant Biotechnol. J.* 7, 2–12. doi: 10.1111/j.1467-7652.2008.00377.x
- Delaunois, B., Farace, G., Jeandet, P., Clément, C., Baillieux, F., Dorey, S., et al. (2014). Elicitors as alternative strategy to pesticides in grapevine? Current knowledge on their mode of action from controlled conditions to vineyard. *Environ. Sci. Pollut. Res. Int.* 21, 4837–4846. doi: 10.1007/s11356-013-1841-4
- Dufour, M. C., Lambert, C., Bouscaut, J., Mérillon, J. M., and Corio-Costet, M. F. (2013). Benzothiadiazole-primed defence responses and enhanced differential expression of defence genes in *Vitis vinifera* infected with biotrophic pathogens *Erysiphe necator* and *Plasmopara viticola*. *Plant Pathol.* 62, 370–382. doi: 10.1111/j.1365-3059.2012.02628.x
- Elmer, P. A. G., and Reglinski, T. (2006). Biosuppression of *Botrytis cinerea* in grapes. *Plant Pathol.* 55, 155–177. doi: 10.1111/j.1365-3059.2006.01348.x
- EPPO. (1988). European and Mediterranean Plant Protection Organization: guideline for the biological evaluation of fungicides: *Uncinula necator*. *EPPO Bull.* 18, 605–612.
- EPPO. (1990). European and Mediterranean Plant Protection Organization: guideline for the biological evaluation of fungicides: powdery mildews on cucurbits and other vegetables. *EPPO Bull.* 20, 451–463.
- Fantke, P., Friedrich, R., and Jolliet, O. (2012). Health impact and damage cost assessment of pesticides in Europe. *Environ. Int.* 49, 9–17. doi: 10.1016/j.envint.2012.08.001
- Fuller, K. B., Alston, J. M., and Sambucci, O. (2014). “The value of powdery mildew resistance in grapes: evidence from California,” in *Robert Mondavi Institute Center for Wine Economics*. (Davis, UC), 1–28.
- Fung, R. W., Gonzalo, M., Fekete, C., Kovacs, L. G., He, Y., Marsh, E., et al. (2008). Powdery mildew induces defense-oriented reprogramming of the transcriptome in a susceptible but not in a resistant grapevine. *Plant Physiol.* 146, 236–249. doi: 10.1104/pp.107.108712
- Gadoury, D. M., Cadle-Davidson, L., Wilcox, W. F., Dry, I. B., Seem, R. C., and Milgroom, M. G. (2012). Grapevine powdery mildew (*Erysiphe necator*): a fascinating system for the study of the biology, ecology and epidemiology of an obligate biotroph. *Mol. Plant. Pathol.* 13, 1–16. doi: 10.1111/j.1364-3703.2011.00728.x
- Gao, F., Dai, R., Pike, S., Qiu, W., and Gassmann, W. (2014). Functions of EDS1-like and PAD4 genes in grapevine defenses against powdery mildew. *Plant Mol. Biol.* 86, 381–393. doi: 10.1007/s11103-014-0235-4
- Gauthier, A., Trouvelot, S., Kelloniemi, J., Frettinger, P., Wendehenne, D., Daire, X., et al. (2014). The sulfated laminarin triggers a stress transcriptome before priming the SA- and ROS-dependent defenses during grapevine's induced resistance against *Plasmopara viticola*. *PLoS ONE* 9:e88145. doi: 10.1371/journal.pone.0088145
- Hamiduzzaman, M. M., Jakab, G., Barnavon, L., Neuhaus, J.-M., and Mauch-Mani, B. (2005).  $\beta$ -aminobutyric acid-induced resistance against downy mildew in grapevine acts through the potentiation of callose formation and jasmonic acid signaling. *Mol. Plant Microbe Interact.* 18, 819–829. doi: 10.1094/MPMI-18-0819
- Heil, M., and Land, W. G. (2014). Danger signals - damaged-self recognition across the tree of life. *Front. Plant Sci.* 5:578. doi: 10.3389/fpls.2014.00578
- Hillocks, R. J. (2012). Farming with fewer pesticides: EU pesticide review and resulting challenges for UK agriculture. *Crop Prot.* 31, 85–93. doi: 10.1016/j.cropro.2011.08.008
- Iriti, M., Vitalini, S., Di Tommaso, G., D'Amico, S., Borgo, M., and Faoro, F. (2011). New chitosan formulation prevents grapevine powdery mildew infection and improves polyphenol content and free radical scavenging activity of grape and wine. *Aust. J. Grape Wine Res.* 17, 263–269. doi: 10.1111/j.1755-0238.2011.00149.x
- Jaulneau, V., Lafitte, C., Corio-Costet, M. F., Stadnik, M. J., Salamagne, S., Briand, X., et al. (2011). An *Ulva armoricana* extract protects plants against three powdery mildew pathogens. *Eur. J. Plant Pathol.* 131, 393–401. doi: 10.1007/s10658-011-9816-0
- Jaulneau, V., Lafitte, C., Jacquet, C., Fournier, S., Salamagne, S., Briand, X., et al. (2010). Ulvan, a sulfated polysaccharide from green algae, activates plant immunity through the jasmonic acid signaling pathway. *J. Biomed. Biotechnol.* 2010:525291. doi: 10.1155/2010/525291
- Jones, J. D. G., and Dangl, J. L. (2006). The plant immune system. *Nature* 444, 323–329. doi: 10.1038/nature05286
- Jones, L., Riaz, S., Morales-Cruz, A., Amrine, K., McGuire, B., Gubler, W., et al. (2014). Adaptive genomic structural variation in the grape powdery mildew pathogen, *Erysiphe necator*. *BMC Genomics* 15:1081. doi: 10.1186/1471-2164-15-1081
- Lachhab, N., Sanzani, S. M., Adrian, M., Chiltz, A., Balacey, S., Boselli, M., et al. (2014). Soybean and casein hydrolysates induce grapevine immune responses and resistance against *Plasmopara viticola*. *Front. Plant Sci.* 5:716. doi: 10.3389/fpls.2014.00716
- Laquitaine, L., Gomès, E., François, J., Marchive, C., Pascal, S., Hamdi, S., et al. (2006). Molecular basis of ergosterol-induced protection of grape against *Botrytis cinerea*: induction of type I LTP promoter activity, WRKY, and stilbene synthase gene expression. *Mol. Plant Microbe Interact.* 19, 1103–1112. doi: 10.1094/MPMI-19-1103
- Macho, A. P., and Zipfel, C. (2014). Plant PRRs and the activation of innate immune signaling. *Mol. Cell* 54, 263–272. doi: 10.1016/j.molcel.2014.03.028
- Mohamed, N., Lherminier, J., Farmer, M. J., Fromentin, J., Béno, N., Houot, V., et al. (2007). Defense responses in grapevine leaves against *Botrytis cinerea* induced by application of a *Pythium oligandrum* strain or its elicitor, oligandrin, to roots. *Phytopathology* 97, 611–620. doi: 10.1094/PHYTO-97-5-0611
- Panstruga, R. (2003). Establishing compatibility between plants and obligate biotrophic pathogens. *Curr. Opin. Plant Biol.* 6, 320–326. doi: 10.1016/S1369-5266(03)00043-8
- Panstruga, R., Parker, J. E., and Schulze-Lefert, P. (2009). SnapShot: plant immune response pathways. *Cell* 136, 978.e1-3. doi: 10.1016/j.cell.2009.02.020
- Perazzolli, M., Dagostin, S., Ferrarini, A., Elad, Y., and Pertot, I. (2008). Induction of systemic resistance against *Plasmopara viticola* in grapevine by *Trichoderma harzianum* T39 and benzothiadiazole. *Biol. Control* 47, 228–234. doi: 10.1016/j.biocontrol.2008.08.008
- Perazzolli, M., Moretto, M., Fontana, P., Ferrarini, A., Velasco, R., Moser, C., et al. (2012). Downy mildew resistance induced by *Trichoderma harzianum* T39 in susceptible grapevines partially mimics transcriptional changes of resistant genotypes. *BMC Genomics* 13:660. doi: 10.1186/1471-2164-13-660
- Perazzolli, M., Roatti, B., Bozza, E., and Pertot, I. (2011). *Trichoderma harzianum* T39 induces resistance against downy mildew by priming for defense without costs for grapevine. *Biol. Control* 58, 74–82. doi: 10.1016/j.biocontrol.2011.04.006
- Peries, O. S. (1962). Studies on strawberry mildew, caused by *Sphaerotheca macularis* (Wallr. ex Fries) Jaczewski\*. *Ann. Appl. Biol.* 50, 225–233. doi: 10.1111/j.1744-7348.1962.tb06005.x
- Pertot, I., and Elad, Y. (2009). *Use of a Composition for Treatment and/or Prophylaxis of Plants and Relative Composition*. Italy Patent Application VR20090123. Verona.
- Pertot, I., El Bilali, H., Simeone, V., Vecchione, A., and Zulini, L. (2006). Efficacy evaluation and phytotoxicity assessment of traditional and new copper compounds used in copper reduction strategies in organic viticulture in northern and southern Italy environments. *IOBC/WPRS Bull.* 29, 61–65.

- Pertot, I., Fiamingo, F., Amsalem, L., Maymon, M., Freeman, S., Gobbin, D., et al. (2007). Sensitivity of two *Podosphaera aphans* populations to disease control agents. *J. Plant Pathol.* 89, 85–96. doi: 10.4454/jpp.v89i1.727
- Pfaffl, M. W. (2001). A new mathematical model for relative quantification in real-time RT-PCR. *Nucleic Acids Res.* 29:e45. doi: 10.1093/nar/29.9.e45
- Pieterse, C. M. J., Leon-Reyes, A., Van der Ent, S., and Van Wees, S. C. M. (2009). Networking by small-molecule hormones in plant immunity. *Nat. Chem. Biol.* 5, 308–316. doi: 10.1038/nchembio.164
- Polesani, M., Bortesi, L., Ferrarini, A., Zamboni, A., Fasoli, M., Zadra, C., et al. (2010). General and species-specific transcriptional responses to downy mildew infection in a susceptible (*Vitis vinifera*) and a resistant (*V. riparia*) grapevine species. *BMC Genomics* 11:117. doi: 10.1186/1471-2164-11-117
- Qiu, W., Feechan, A., and Dry, I. (2015). Current understanding of grapevine defense mechanisms against the biotrophic fungus (*Erysiphe necator*), the causal agent of powdery mildew disease. *Hortic. Res.* 2, 15020. doi: 10.1038/hortres.2015.20
- Repka, V. (2001). Elicitor-stimulated induction of defense mechanisms and defense gene activation in grapevine cell suspension cultures. *Biol. Plant.* 44, 555–565. doi: 10.1023/A:1013742703929
- Roatti, B., Perazzolli, M., Gessler, C., and Pertot, I. (2013). Abiotic stresses affect *Trichoderma harzianum* T39-induced resistance to downy mildew in grapevine. *Phytopathology* 103, 1227–1234. doi: 10.1094/PHYTO-02-13-0040-R
- Robert-Seilaniantz, A., Grant, M., and Jones, J. D. G. (2011). Hormone crosstalk in plant disease and defense: more than just jasmonate-salicylate antagonism. *Annu. Rev. Phytopathol.* 49, 317–343. doi: 10.1146/annurev-phyto-073009-114447
- Ruijter, J. M., Ramakers, C., Hoogaars, W. M., Karlen, Y., Bakker, O., Van den Hoff, M. J., et al. (2009). Amplification efficiency: linking baseline and bias in the analysis of quantitative PCR data. *Nucleic Acids Res.* 37:e45. doi: 10.1093/nar/gkp045
- Schulze-Lefert, P., and Panstruga, R. (2003). Establishment of biotrophy by parasitic fungi and reprogramming of host cells for disease resistance. *Annu. Rev. Phytopathol.* 41, 641–667. doi: 10.1146/annurev.phyto.41.061002.083300
- Skevas, T., Oude Lansink, A. G. J. M., and Stefanou, S. E. (2013). Designing the emerging EU pesticide policy: a literature review. *NJAS Wageningen J. Life Sci.* 64–65, 95–103. doi: 10.1016/j.njas.2012.09.001
- Stummer, B. L., Francism, L., Markides, A. J., and Scott, E. S. (2003). The effect of powdery mildew infection on grape berries and wine composition and sensory properties of Chardonnay wines. *Aust. J. Grape Wine Res.* 9, 28–39. doi: 10.1111/j.1755-0238.2003.tb00229.x
- Trdá, L., Fernandez, O., Boutrot, F., Héloir, M. C., Kelloniemi, J., Daire, X., et al. (2014). The grapevine flagellin receptor VvFLS2 differentially recognizes flagellin-derived epitopes from the endophytic growth-promoting bacterium *Burkholderia phytofirmans* and plant pathogenic bacteria. *New Phytol.* 201, 1371–1384. doi: 10.1111/nph.12592
- Trotel-Aziz, P., Couderchet, M., Vernet, G., and Aziz, A. (2006). Chitosan stimulates defense reactions in grapevine leaves and inhibits development of *Botrytis cinerea*. *Eur. J. Plant Pathol.* 114, 405–413. doi: 10.1007/s10658-006-0005-5
- Trouvelot, S., Varnier, A. L., Allègre, M., Mercier, L., Baillieu, F., Arnould, C., et al. (2008). A  $\beta$ -1,3 glucan sulfate induces resistance in grapevine against *Plasmopara viticola* through priming of defense responses, including HR-like cell death. *Mol. Plant Microbe Interact.* 21, 232–243. doi: 10.1094/MPMI-21-2-0232
- van Aubel, G., Buonatesta, R., and Van Cutsem, P. (2014). COS-OGA: a novel oligosaccharidic elicitor that protects grapes and cucumbers against powdery mildew. *Crop Prot.* 65, 129–137. doi: 10.1016/j.cropro.2014.07.015
- Varnier, A. L., Sanchez, L., Vatsa, P., Boudesocque, L., Garcia-Brugger, A., Rabenoelina, F., et al. (2009). Bacterial rhamnolipids are novel MAMPs conferring resistance to *Botrytis cinerea* in grapevine. *Plant Cell Environ.* 32, 178–193. doi: 10.1111/j.1365-3040.2008.01911.x
- Weng, K., Li, Z. Q., Liu, R. Q., Wang, L., Wang, Y. J., and Xu, Y. (2014). Transcriptome of *Erysiphe necator*-infected *Vitis pseudoreticulata* leaves provides insight into grapevine resistance to powdery mildew. *Hortic. Res.* 1:14049. doi: 10.1038/hortres.2014.49
- Wiesel, L., Newton, A. C., Elliott, I., Booty, D., Gilroy, E. M., Birch, P. R. J., et al. (2014). Molecular effects of resistance elicitors from biological origin and their potential for crop protection. *Front. Plant Sci.* 5:655. doi: 10.3389/fpls.2014.00655
- Wu, S., Shan, L., and He, P. (2014). Microbial signature-triggered plant defense responses and early signaling mechanisms. *Plant Sci.* 228, 118–126. doi: 10.1016/j.plantsci.2014.03.001

**Conflict of Interest Statement:** The authors declare that the research was conducted in the absence of any commercial or financial relationships that could be construed as a potential conflict of interest.

Copyright © 2015 Nesler, Perazzolli, Puopolo, Giovannini, Elad and Pertot. This is an open-access article distributed under the terms of the Creative Commons Attribution License (CC BY). The use, distribution or reproduction in other forums is permitted, provided the original author(s) or licensor are credited and that the original publication in this journal is cited, in accordance with accepted academic practice. No use, distribution or reproduction is permitted which does not comply with these terms.