



Contents lists available at ScienceDirect

Nuclear Inst. and Methods in Physics Research, A

journal homepage: www.elsevier.com/locate/nima

Analog Front-End for the Readout of LGAD-Based Particle Detectors

Simone Giroletti ^{a,b}, Paolo Brogi ^{c,d}, Gianmaria Collazuol ^{e,f}, Gian-Franco Dalla Betta ^{g,h}, Massimo Manghisoni ^{i,b}, Pier Simone Marrocchesi ^{c,d}, Fabio Morsani ^d, Lucio Pancheri ^{g,h}, Lodovico Ratti ^{a,b}, Carla Vacchi ^{a,b}

^a Università di Pavia, Dipartimento di Ingegneria Industriale e dell'Informazione, I-27100, Pavia, Italy^b INFN, Sezione di Pavia, I-27100, Pavia, Italy^c Università di Siena, DSFTA, I-53100, Siena, Italy^d INFN, Sezione di Pisa, I-56127, Pisa, Italy^e Università di Padova, I-35131, Padova, Italy^f INFN, Sezione di Padova, I-35131, Padova, Italy^g Università di Trento, Dipartimento di Ingegneria Industriale, I-38123, Trento, Italy^h INFN, TIFPA, I-38123, Trento, Italyⁱ Università di Bergamo, Dipartimento di Ingegneria e Scienze Applicate, I-24044, Dalmine, Italy

ARTICLE INFO

Keywords:

Analog Front-End
Charge Sensitive Amplifier
Fast Discriminator
Shaper
Time-to-Amplitude Converter

ABSTRACT

This paper presents an analog front-end channel for the readout of Low Gain Avalanche Diodes (LGADs) based particle detectors for the next generation of space-borne experiments. The circuit has been designed in a 65 nm CMOS technology. The charge generated by the detector is integrated by a Charge Sensitive Amplifier (CSA) with dynamic signal compression feature to achieve improved noise performance, along with enhanced time resolution capabilities over the wide range of input charge to be detected (from 45 fC to 16 pC). An RC-CR shaper with selectable shaping time, a fast discriminator and a Time-to-Amplitude Converter (TAC) complete the readout circuit. An SNR around 300, together with a time resolution of slightly below 60 ps, is achieved in post-layout simulations.

1. Introduction

In space experiments, charge identification of individual cosmic-ray elements with energies greater than hundreds of GeV suffers from the presence of backscattered radiation (BS) originating from the calorimeter [1]. Indeed, the backscattered radiation degrades the detector charge resolution whenever it falls onto the same detector element traversed by the incident cosmic-ray. However, spurious signals from backscattering can be prevented by exploiting the difference in the arrival time between the incident particle and the backscattered radiation hitting the detector, being the two events separate in time. Thus, with a flight time of around 700 ps between the detector and the calorimeter, in order to efficiently reject BS to better than five sigma, front-end (FE) circuits for particle detectors should provide a time resolution better than 100–150 ps. To this end, the ADA-5D project (funded by the National Institute for Nuclear Physics, INFN, Italy) aims at the development of an innovative particle detector, consisting of arrays of Low Gain Avalanche Diodes (LGADs), featuring internal gain amplification, for the simultaneous measurement of the incident particle position (x , y and z coordinates, for tracking purposes), charge (for nucleus identification) and timing (for false signal rejection).

2. Analog front-end

Fig. 1 provides a schematic representation of the proposed FE channel for LGAD based particle detectors. When cosmic rays hit the LGAD sensor (not included in the FE), the charge generated by impact ionization is amplified by the internal gain and fed to the Charge Sensitive Amplifier (CSA), which performs a charge-to-voltage conversion. The CSA implements a dynamic signal compression feature (by taking advantage of the non-linear features of MOS capacitors [2]) to achieve improved noise performance, along with enhanced time resolution capabilities over the wide range of input charge to be detected, from 45 fC to 16 pC [3]. The CSA output signal is then fed to the shaping stage (with selectable shaping time, i.e., 10 ns, 15 ns, 25 ns and 45 ns), which implements a semi-Gaussian shaping filter of the first order (i.e., an RC-CR shaper). After the shaper, a fast discriminator and a Time-to-Amplitude Converter (TAC) have been included into the FE channel. The discriminator has been designed as the cascade of low-gain cells featuring high Gain-Bandwidth Product (GBP) to obtain a fast response, for jitter minimization. The TAC, designed in a pseudo-

* Corresponding author at: Università di Pavia, Dipartimento di Ingegneria Industriale e dell'Informazione, I-27100, Pavia, Italy.
E-mail address: simone.giroletti01@universitadipavia.it (S. Giroletti).

<https://doi.org/10.1016/j.nima.2024.169724>

Received 29 June 2024; Received in revised form 5 August 2024; Accepted 8 August 2024

Available online 10 August 2024

0168-9002/© 2024 The Authors. Published by Elsevier B.V. This is an open access article under the CC BY-NC-ND license (<http://creativecommons.org/licenses/by-nc-nd/4.0/>).

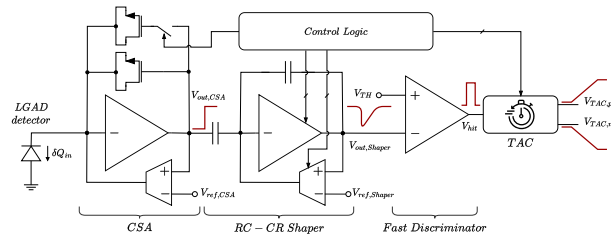


Fig. 1. Schematic diagram of the designed FE circuit.

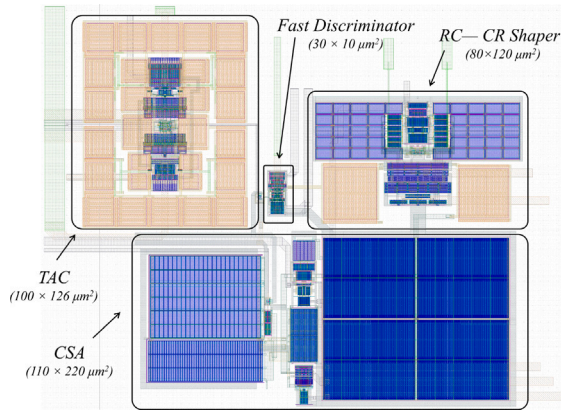


Fig. 2. Layout of the complete FE channel. It features an overall area of $240 \times 270 \mu\text{m}^2$ (TAC and RC-CR Shaper MIM capacitances included).

differential fashion, consists of a pair of integrators where the feedback capacitor is charged by a constant current. Thus, when a hit is detected, a ramp-like output signal is generated at the output of the TAC. At this step, timing information on the detected event can be derived, being the output voltage proportional to the time interval between the hit detection and the trigger signal. The designed TAC can operate over two selectable Full-Scale Ranges (FSRs), namely 100 ns and 1 μs [4]. The layout of the proposed FE is shown in Fig. 2.

3. Post-layout simulation results

Fig. 3 shows a time diagram of the output of all the blocks included in the FE. In the graphs, a shaping time of 10 ns is set for the shaping stage, whereas post-layout results refer to an injected charge varying within the input dynamic range of interest. The CSA provides a trilinear response with high-gain, medium-gain and low-gain regions featuring a charge sensitivity $S_{q,h} \approx 833 \text{ mV/pC}$, $S_{q,m} \approx 52 \text{ mV/pC}$ and $S_{q,l} \approx 19 \text{ mV/pC}$ respectively (extracted from post-layout simulations). This behavior is obtained through an equivalent feedback capacitance varying from 1.2 pF to around 53 pF. The CSA step-like output signal features a recovery time of around 10 μs . As a consequence of the dynamic signal compression, the overall output signal amplitude increases less than linearly (as can be seen in Fig. 3, first plot from the top). Simulations show also that the rising time is within 10 ns for all the output signals, under nominal conditions as well as in all the process corners, as required by project specifications. From post-layout simulations, the discriminator features a positive slew-rate of nearly 4.2 V/ns. An Equivalent Noise Charge $\text{ENC} \leq 945 e^-$ is obtained in post-layout simulations, which leads to an $\text{SNR} \geq 300$. The jitter of the overall channel up to the discriminator is around 100 ps (less than 60 ps after the TAC at 100 ns FSR and less than 180 ps at 1 μs FSR [4]), in agreement with the project specifications.

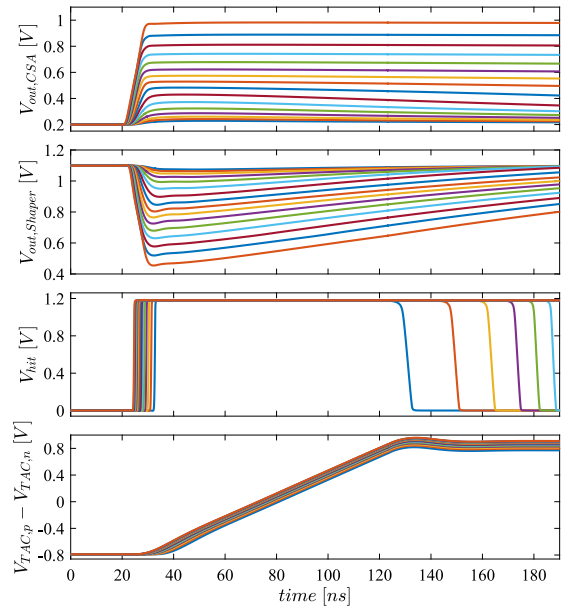


Fig. 3. Post-layout transient response of the analog FE channel to an input charge varying from 45 fC to 16 pC, with 6 steps per decade (the ratio between two consecutive steps is $\sqrt[6]{10}$). The horizontal scale is the same for all graphs.

4. Conclusion

The paper discusses the design of a FE circuit capable of working over a range of input charge larger than three decades (from 45 fC to 16 pC). The CSA implementing a dynamic signal compression feature allows to achieve improved noise performance along with enhanced time resolution capabilities over the wide range of input charge to be detected. The test chip has been delivered on Q2 2024 and is now under testing.

Declaration of competing interest

The authors declare that they have no known competing financial interests or personal relationships that could have appeared to influence the work reported in this paper.

References

- [1] K. Kobayashi, P.S. Marrocchesi, Extended measurement of the proton spectrum with CALET on the international space station, PoS ICRC2021 (2021) 098, <http://dx.doi.org/10.22323/1.395.0098>.
- [2] S. Giroletti, F. Shojaei, M. Manghisoni, L. Ratti, C. Vacchi, Modeling I-MOS capacitor C-V characteristic for non-linear charge sensitive amplifiers, in: 2024 19th Conference on Ph.D Research in Microelectronics and Electronics, PRIME, Larnaca, Cyprus, Jun., 2024, pp. 1–4, <http://dx.doi.org/10.1109/PRIME61930.2024.10559677>.
- [3] S. Giroletti, L. Ratti, C. Vacchi, Charge sensitive amplifiers with bi- and trilinear signal compression feature for LGAD detectors, in: 2023 18th Conference on Ph.D Research in Microelectronics and Electronics, PRIME, Valencia, Spain, Jun., 2023, pp. 105–108, <http://dx.doi.org/10.1109/PRIME58259.2023.10161751>.
- [4] S. Giroletti, L. Ratti, C. Vacchi, Pseudo-differential time-to-amplitude converter for LGAD based particle detectors, in: 2024 IEEE International Symposium on Circuits and Systems, ISCAS, Singapore, Singapore, May, 2024, pp. 1–5, <http://dx.doi.org/10.1109/ISCAS58744.2024.10558573>.